

| | | | |
|--|------------------------|-----------------------------|---|
| WAAS CH 82733 W33A | APP CRS 335° | Rwy Ldg TDZE Apt Elev | 3304 766 769 |
|--|------------------------|-----------------------------|---|

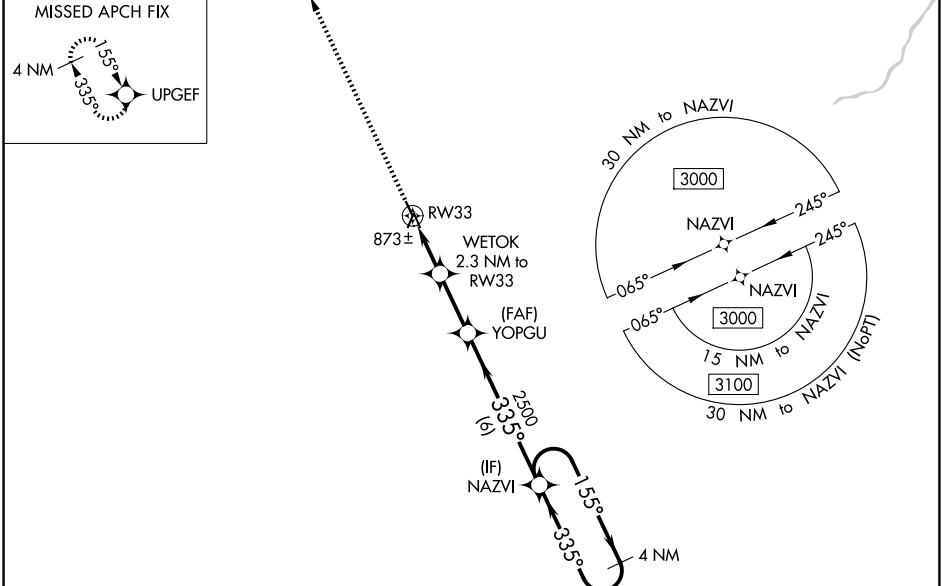
RNAV (GPS) RWY 33

MAQUOKETA MUNI (OQW)

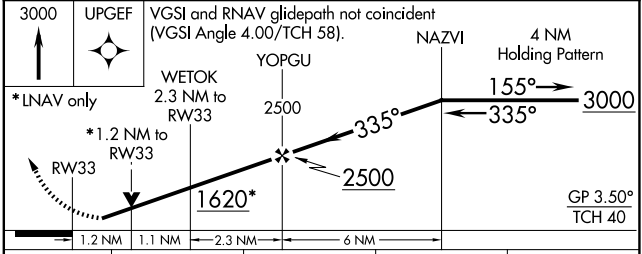
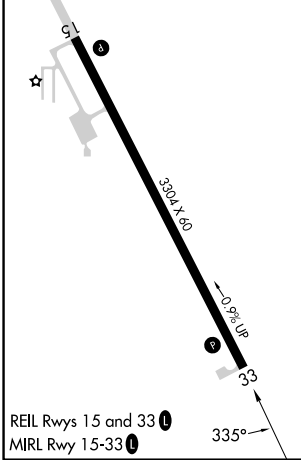
⚠ Circling to Rwy 15 NA at night. Baro-VNAV NA when using Dubuque altimeter setting. For uncompensated Baro-VNAV systems, LNAV/VNAV NA below -16°C (4°F) or above 54°C (130°F). DME/DME RNP-0.3 NA. Helicopter visibility reduction below 1 SM NA. Obtain local altimeter on CTAF; when not received, use Dubuque altimeter setting and increase all DA 92 feet and all MDA 100 feet. Increase LPV all Cats visibility to 1¼ mile and LNAV/VNAV all Cats visibility to 1½ mile.

⚠ NA MISSED APPROACH: Climb to 3000 direct UPGEF and hold.

| | |
|---------------------------------------|-----------------------------------|
| CHICAGO CENTER 133.95 281.4 | UNICOM 122.725 (CTAF) 0 |
|---------------------------------------|-----------------------------------|



| | |
|----------|----------|
| ELEV 769 | TDZE 766 |
|----------|----------|



| CATEGORY | A | B | C | D |
|--------------|-----------------------|-----------------------|---|----|
| LPV DA | 1106-1 | 340 (400-1) | | NA |
| LNAV/VNAV DA | 1064-1 | 298 (300-1) | | NA |
| LNAV MDA | 1140-1 | 374 (400-1) | | NA |
| CIRCLING | 1240-1 471 (500-1) | 1400-1 631 (700-1) | | NA |

NC-3, 11 JUN 2026 to 09 JUL 2026

NC-3, 11 JUN 2026 to 09 JUL 2026