

WAAS CH <b>97330</b> <b>W22A</b>	APP CRS <b>225°</b>	Rwy Idg TDZE Apt Elev	<b>5243</b> <b>574</b> <b>578</b>
--	------------------------	-----------------------------	---

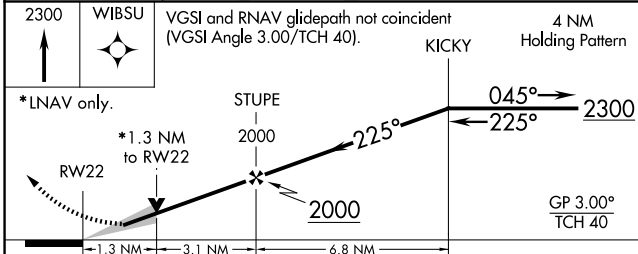
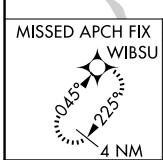
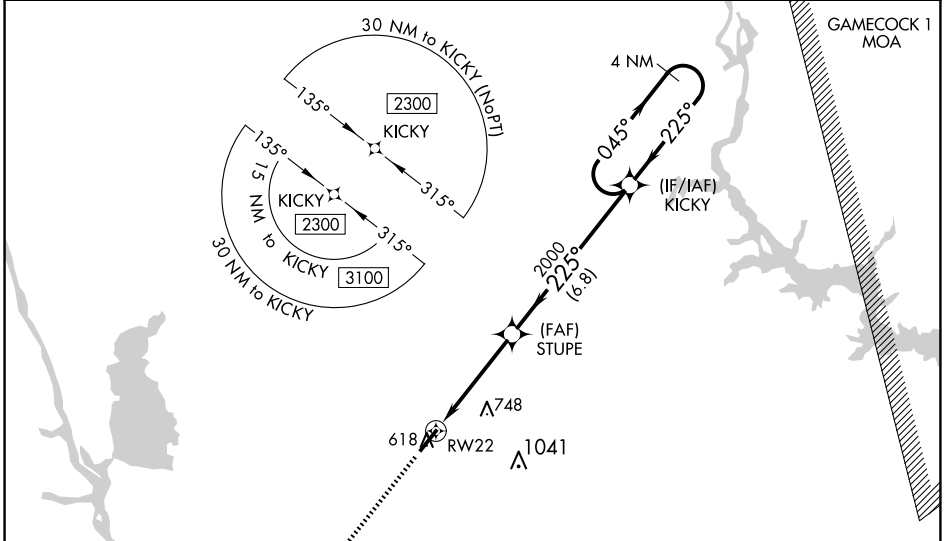
# RNAV (GPS) RWY 22

FAIRFIELD COUNTY (F'DW)

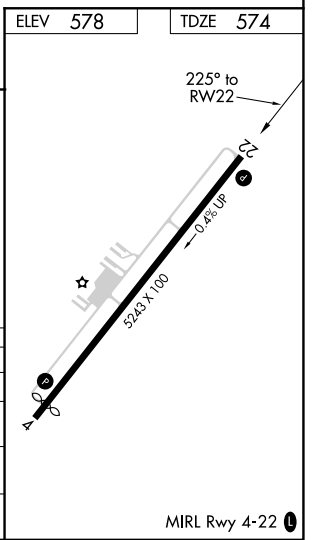
▼ For uncompensated Baro-VNAV systems, LNAV/VNAV NA below -16°C (4°F) or above 54°C (130°F). DME/DME RNP-0.3 NA.

▲ MISSED APPROACH: Climb to 2300 direct WBSU and hold.

AWOS-3 <b>119.075</b>	COLUMBIA APP CON <b>133.4 285.6</b>	UNICOM <b>123.05 (CTAF)</b>
--------------------------	--	--------------------------------



3000	WBSU	VGSI and RNAV glidepath not coincident (VGSI Angle 3.00/TCH 40).		4 NM Holding Pattern
*LNAV only.		STUPE		045° → 2300
		2000		← 225°
				GP 3.00° TCH 40
		1.3 NM	3.1 NM	6.8 NM
CATEGORY	A	B	C	D
LPV DA		824-7/8	250 (300-7/8)	
LNAV/VNAV DA		824-7/8	250 (300-7/8)	
LNAV MDA	1000-1	426 (500-1)	1000-1/4	426 (500-1/4)
CIRCLING	1000-1 422 (500-1)	1040-1 462 (500-1)	1080-1/2 502 (600-1/2)	1360-2/2 782 (800-2/2)



SE-2, 11 JUN 2026 to 09 JUL 2026

SE-2, 11 JUN 2026 to 09 JUL 2026