

WAAS CH <b>82335</b> <b>W19A</b>	APP CRS <b>189°</b>	Rwy Ldg TDZE Apt Elev	<b>5000</b> <b>1077</b> <b>1077</b>
--	------------------------	-----------------------------	---

# RNAV (GPS) RWY 19

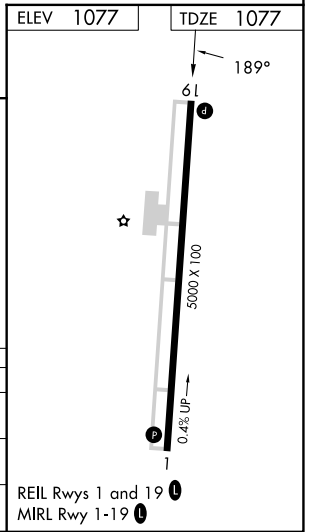
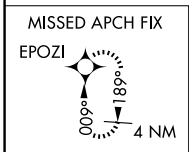
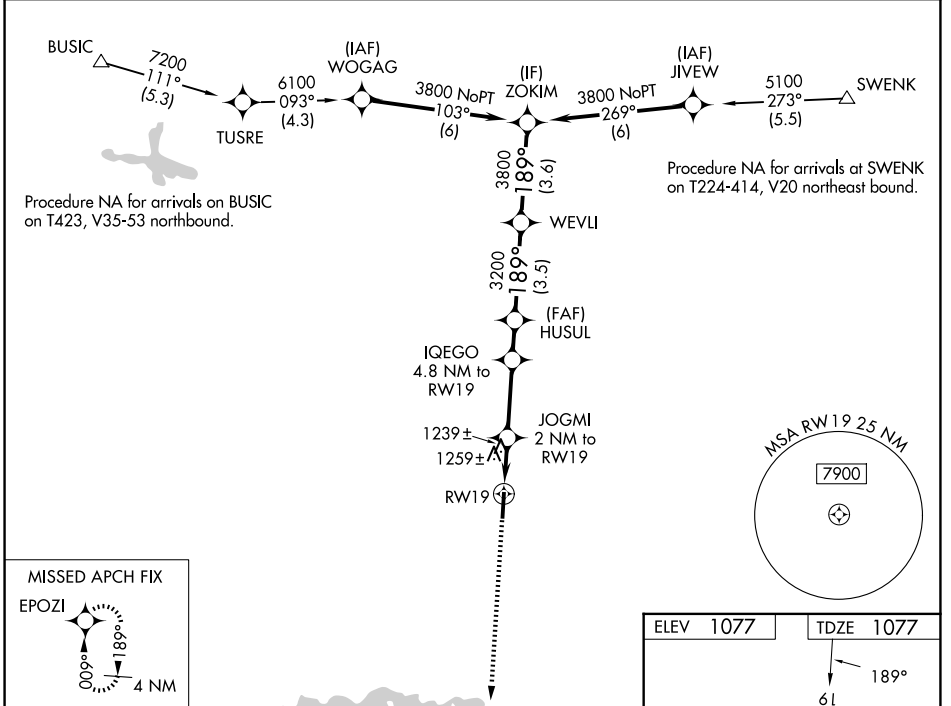
RUTHERFORD COUNTY/MARCHMAN FLD (FQD)

RNP APCH - GPS.

When local altimeter setting not received, use EHO altimeter setting and increase all MDAs 80 feet and LNAV visibility Cat C/D 1/8 SM and LP visibility Cat C/D 1/8 SM, and Circling visibility Cat C/D 1/4 SM. VDP NA when using EHO altimeter setting.

MISSED APPROACH:  
Climb to 3000 direct EPOZI and hold.

AWOS-3 <b>118.275</b>	GREER APP CON* <b>119.4 350.2</b>	UNICOM <b>122.8 (CTAF) 0</b>
--------------------------	--------------------------------------	---------------------------------



3000	EPOZI				
		IQEGO 4.8 NM to RW19	HUSUL	WEVLI	ZOKIM
		JOGMI 2 NM to RW19			
		1.1 NM to RW19	0.9	2.8 NM	1.4 NM
		1780	2720	3200	3800
		1.1	0.9	2.8 NM	1.4 NM
		1.1	0.9	2.8 NM	1.4 NM
CATEGORY	A	B	C	D	
LP MDA	1500-1	423 (500-1)	1500-1 1/4	423 (500-1 1/4)	
LNAV MDA	1520-1	443 (500-1)	1520-1 3/8	443 (500-1 3/8)	
CIRCLING	1560-1	1620-1	1660-1 1/2	1820-2 1/2	
	483 (500-1)	543 (600-1)	583 (600-1 1/2)	743 (800-2 1/2)	

SE-2, 11 JUN 2026 to 09 JUL 2026

SE-2, 11 JUN 2026 to 09 JUL 2026