

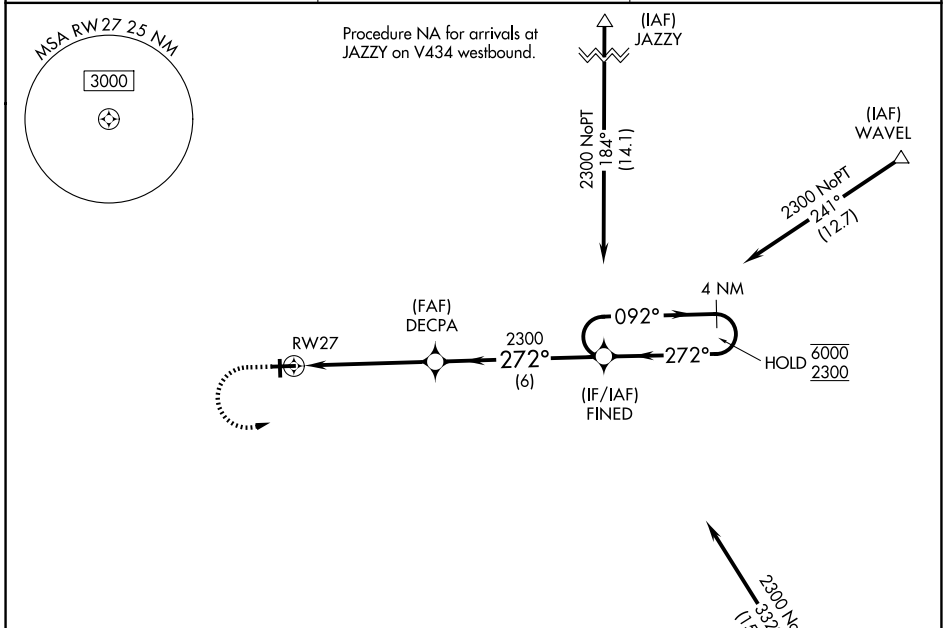
WAAS CH <b>61239</b> <b>W27A</b>	APP CRS <b>272°</b>	Rwy Ldg TDZE Apt Elev	<b>4501</b> <b>651</b> <b>654</b>
--	------------------------	-----------------------------	---

# RNAV (GPS) RWY 27

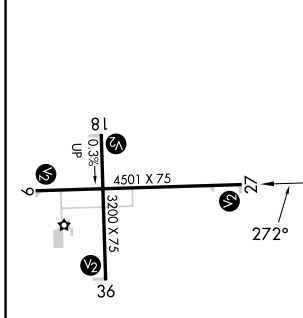
EDGAR COUNTY (PRG)

RNP APCH.	MISSED APPROACH: Climb to 1120 then climbing left turn to 2300 direct FINED and hold.
<b>⚠</b> Circling Rwy 18 NA at night. Rwy 27 helicopter visibility reduction below 3/4 SM NA. For uncompensated Baro-VNAV systems, LNAV/VNAV NA below -16°C or above 54°C.	

AWOS-3 <b>124.175</b>	HULMAN APP CON <b>125.45 339.8</b>	UNICOM <b>123.0 (CTAF) 0</b>
--------------------------	---------------------------------------	---------------------------------

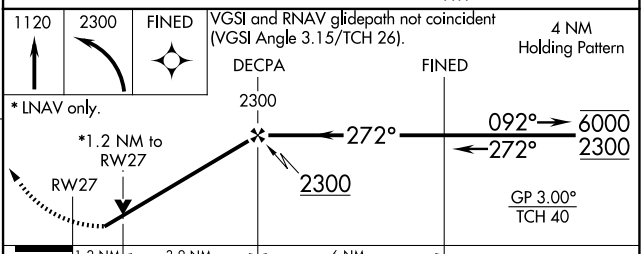


ELEV <b>654</b>	TDZE <b>651</b>
-----------------	-----------------



Procedure NA for arrivals on TTH VORTAC airway radials 254 CW 303.

(IAF) TERRE HAUTE TTH



CATEGORY	A	B	C	D
LPV DA	901-1 250 (300-1)			
LNAV/VNAV DA	925-1 274 (300-1)			
LNAV MDA	1080-1 429 (500-1)	1080-1 1/4 429 (500-1 1/4)		
CIRCLING	1080-1 426 (500-1)	1120-1 466 (500-1)	1200-1 1/2 546 (600-1 1/2)	1320-2 666 (700-2)

EC-3, 11 JUN 2026 to 09 JUL 2026

EC-3, 11 JUN 2026 to 09 JUL 2026