

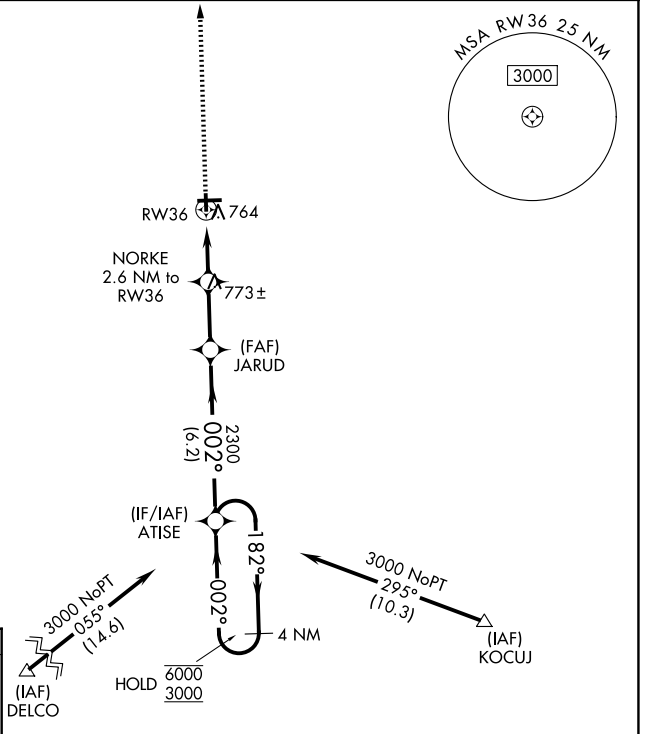
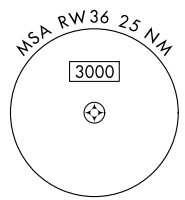
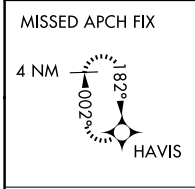
WAAS CH <b>78339</b> <b>W36A</b>	APP CRS <b>002°</b>	Rwy Ldg TDZE <b>3200</b> <b>654</b> Apt Elev <b>654</b>
--	------------------------	--

# RNAV (GPS) RWY 36

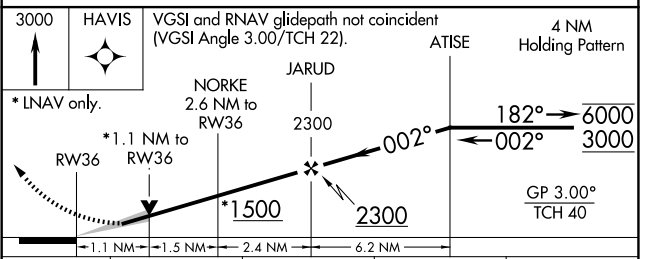
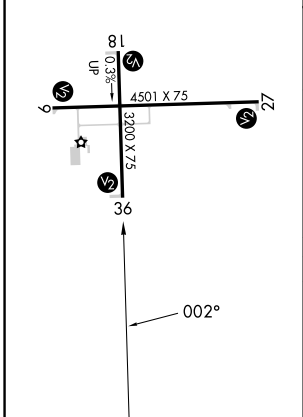
EDGAR COUNTY (PRG)

RNP APCH.	MISSED APPROACH: Climb to 3000 direct HAVIS and hold.
<p><b>⚠</b> For uncompensated Baro-VNAV systems, procedure NA below -16°C or above 54°C.  <b>⚠</b> Circling Rwy 18 NA at night.</p>	

AWOS-3 <b>124.175</b>	HULMAN APP CON <b>125.45 339.8</b>	UNICOM <b>123.0 (CTAF)</b>
--------------------------	---------------------------------------	-------------------------------



ELEV 654	TDZE 654
REIL Rwy 27 MIRL Rwys 9-27 and 18-36	



CATEGORY	A	B	C	D
LPV DA		904-1	250 (300-1)	
LNAV/VNAV DA		925-1	271 (300-1)	
LNAV MDA		1020-1	366 (400-1)	
CIRCLING	1080-1	1120-1	1200-1½	1320-2
	426 (500-1)	466 (500-1)	546 (600-1½)	666 (700-2)

EC-3, 11 JUN 2026 to 09 JUL 2026

EC-3, 11 JUN 2026 to 09 JUL 2026