

WAAS CH 48837 W22A	APP CRS 218°	Rwy Ldg TDZE 5004 2382 Apt Elev 2396
--	------------------------	--

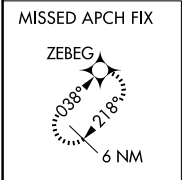
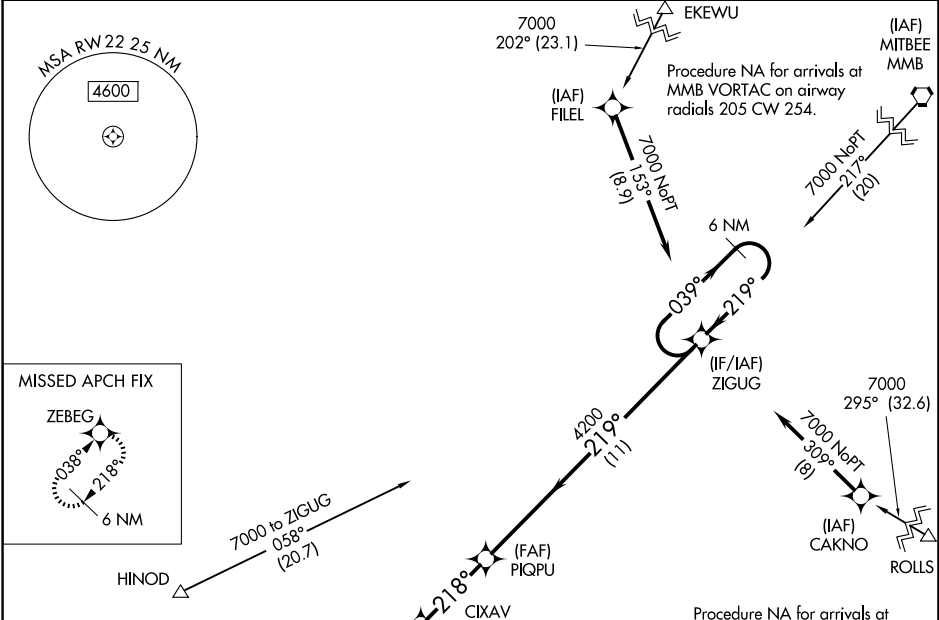
RNAV (GPS) RWY 22

HEMPHILL COUNTY (HHF)

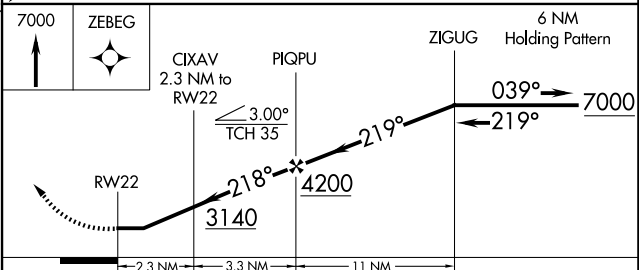
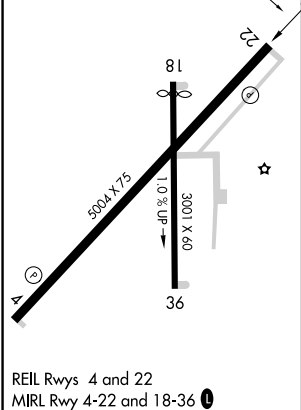
⚠ DME/DME RNP-0.3 NA. When local altimeter setting not received, use Gage altimeter setting and increase all MDA 120 feet, increase LP and LNAV visibility Cat C and D 3/8 mile and Circling Cat C 1/2 mile. Helicopter visibility reduction below 3/4 SM NA. Circling Rwy 18, 36 NA at night.

MISSED APPROACH: Climb to 7000 direct ZEBEG and hold, continue climb-in-hold to 7000.

AWOS-3PT 119.025	ALBUQUERQUE CENTER 127.85 285.475	KANSAS CITY CENTER 126.95 379.2	CTAF 122.9
----------------------------	---	---	----------------------



ELEV 2396	TDZE 2382
-----------	-----------



CATEGORY	A	B	C	D
LP MDA	2800-1	418 (500-1)	2800-1 1/8	418 (500-1 1/8)
LNAV MDA	2860-1	478 (500-1)	2860-1 1/8	478 (500-1 1/8)
CIRCLING	3040-1	644 (700-1)	3280-2 3/4 884 (900-2 3/4)	3340-3 944 (1000-3)

SC-2, 11 JUN 2026 to 09 JUL 2026

SC-2, 11 JUN 2026 to 09 JUL 2026