

CAMP MACKALL, NORTH CAROLINA

# RNAV (GPS) RWY 12

WAAS CH <b>92382</b> W12A	APCH CRS <b>118°</b>	Rwy ldg TDZE Arpt Elev	<b>4794</b> <b>375</b> <b>376</b>
---------------------------------	-------------------------	------------------------------	---

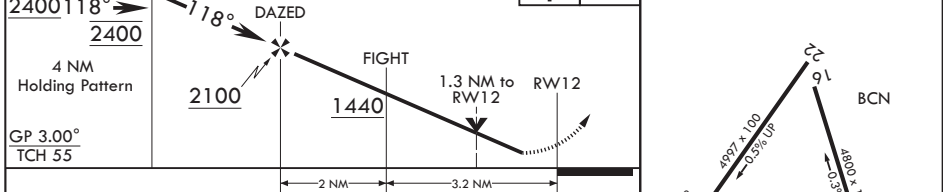
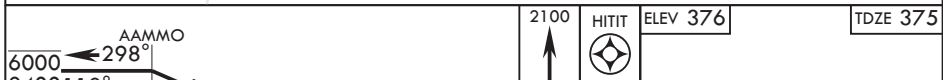
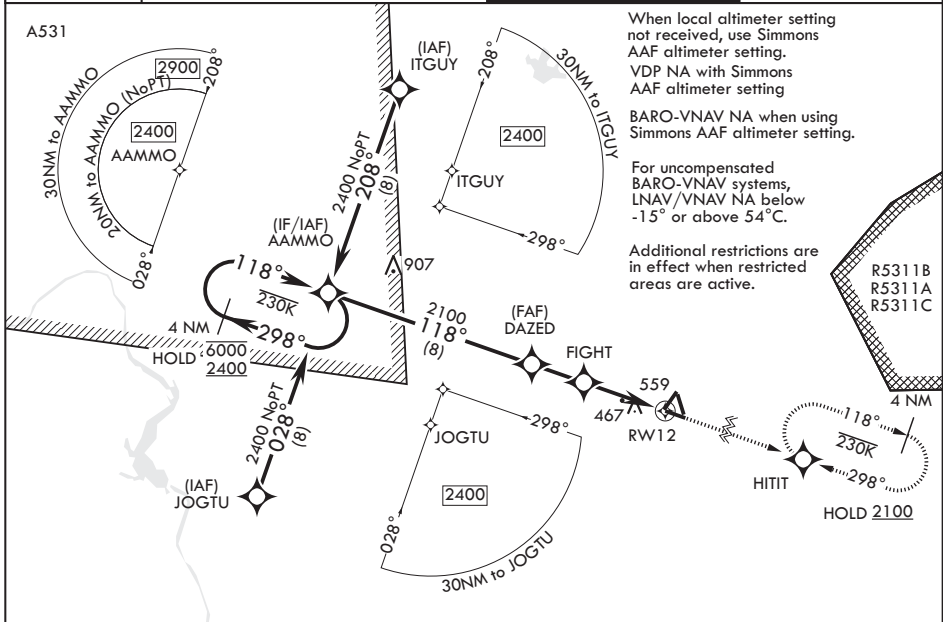
(USA)

MACKALL AAF (KHFF)

RNP APCH - GPS MISSED APPROACH: Climb to 2100 direct HITIT and hold.

▼ \* When tower closed, increase vis to 1 mile.  
\*\* Circling NA to RWYs 4,1,6,22, and 34.

D-ATIS <b>141.4</b>	FAYETTEVILLE APP CON/DEP CON <b>127.8 343.725</b>	TOWER★ <b>121.0 (CTAF) 0 254.4</b>	GND CON <b>128.35 251.05</b>
------------------------	--	---------------------------------------	---------------------------------



CATEGORY	A	B	C	D
LPV DA*	575-3/4	200	(200-3/4)	
LNAV/VNAV DA	851-1 3/8	476	(500-1 3/8)	
LNAV MDA	840-1 465 (500-1)	840-1 3/8 465 (500-1 3/8)		
CIRCLING**	860-1 484 (500-1)	880-1 504 (600-1)	980-1 3/4 604 (700-1 3/4)	1040-2 664 (700-2)
SIMMONS AAF ALTIMETER SETTING MINIMUMS				
LPV DA*	659-7/8	284	(300-7/8)	
LNAV/VNAV DA	935-1 3/8	560	(600-1 3/8)	
LNAV MDA	940-1 565 (600-1)	940-1 5/8 565 (600-1 5/8)		
CIRCLING**	960-1 584 (600-1)	980-1 604 (700-1)	1080-2 704 (800-2)	1140-2 1/2 764 (800-2 1/2)

MIRL Rwy 12-30

CAMP MACKALL, NORTH CAROLINA 35°02'N - 79°30'W MACKALL AAF (KHFF)

# RNAV (GPS) RWY 12

Amdt 1 10AUG23

SE-2, 11 JUN 2026 to 09 JUL 2026

SE-2, 11 JUN 2026 to 09 JUL 2026