

| | | |
|-------------|----------|-------------|
| APP CRS | Rwy Ldg | 3900 |
| 269° | TDZE | 691 |
| | Apt Elev | 691 |

RNAV (GPS) RWY 27

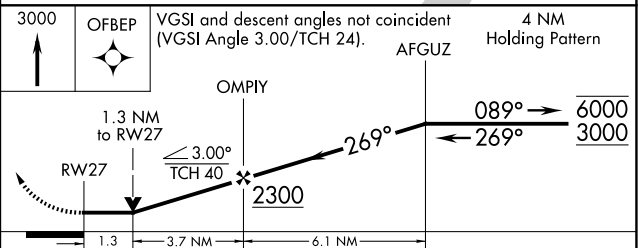
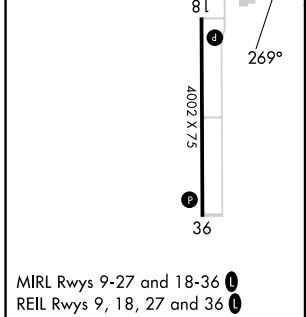
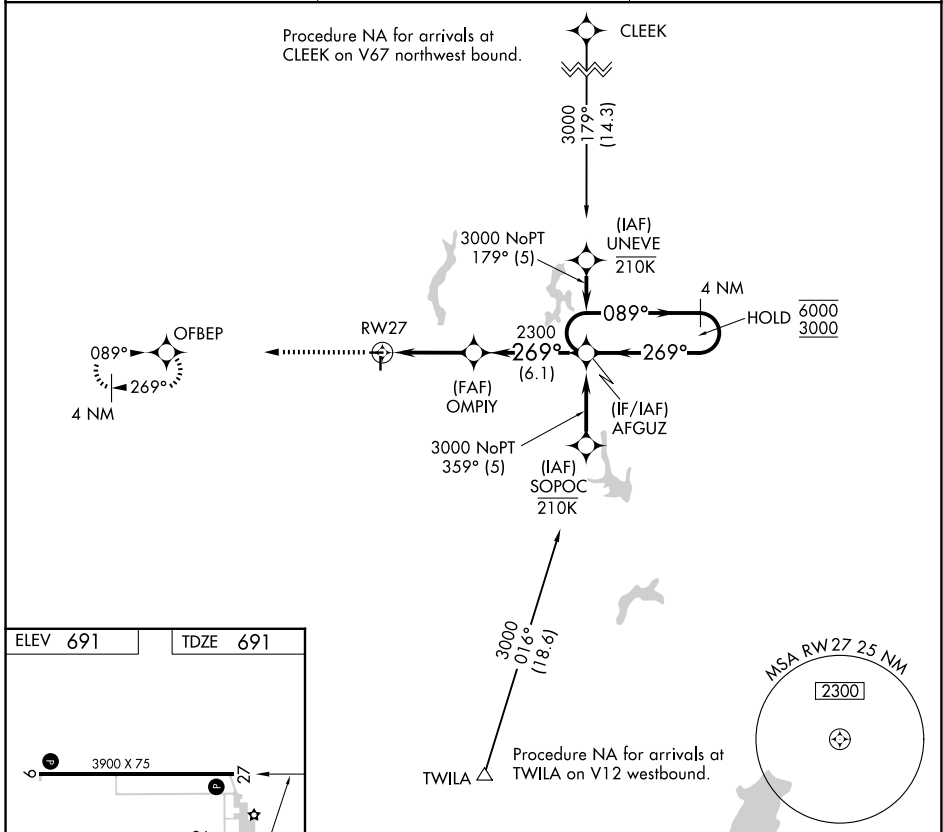
LITCHFIELD MUNI (3LF)

RNP APCH - GPS.

⚠ Rwy 27 helicopter visibility reduction below 3/4 SM NA. When local altimeter setting not received, use Taylorville altimeter setting and increase all MDA 80 feet and LNAV Cat C visibility 1/8 SM. VDP NA when using Taylorville altimeter setting.

MISSED APPROACH: Climb to 3000 direct OFBEP and hold.

| | | |
|----------------------------|---|---------------------------------|
| AWOS-3PT 118.175 | ST. LOUIS APP CON 124.2 353.9 | UNICOM 122.8 (CTAF) 0 |
|----------------------------|---|---------------------------------|



| CATEGORY | A | B | C | D |
|----------|--------|-------------|-------------------------------|----|
| LNAV MDA | 1120-1 | 429 (500-1) | 1120-1 1/4 429 (500-1 1/4) | NA |

EC-3, 11 JUN 2026 to 09 JUL 2026

EC-3, 11 JUN 2026 to 09 JUL 2026