

**TOP ALTITUDE:
ASSIGNED BY ATC**

RNAV 1 - DME/DME/IRU or GPS required.

RADAR required.

LONE STAR DEP CON
124.3 282.275
CTAF
122.8

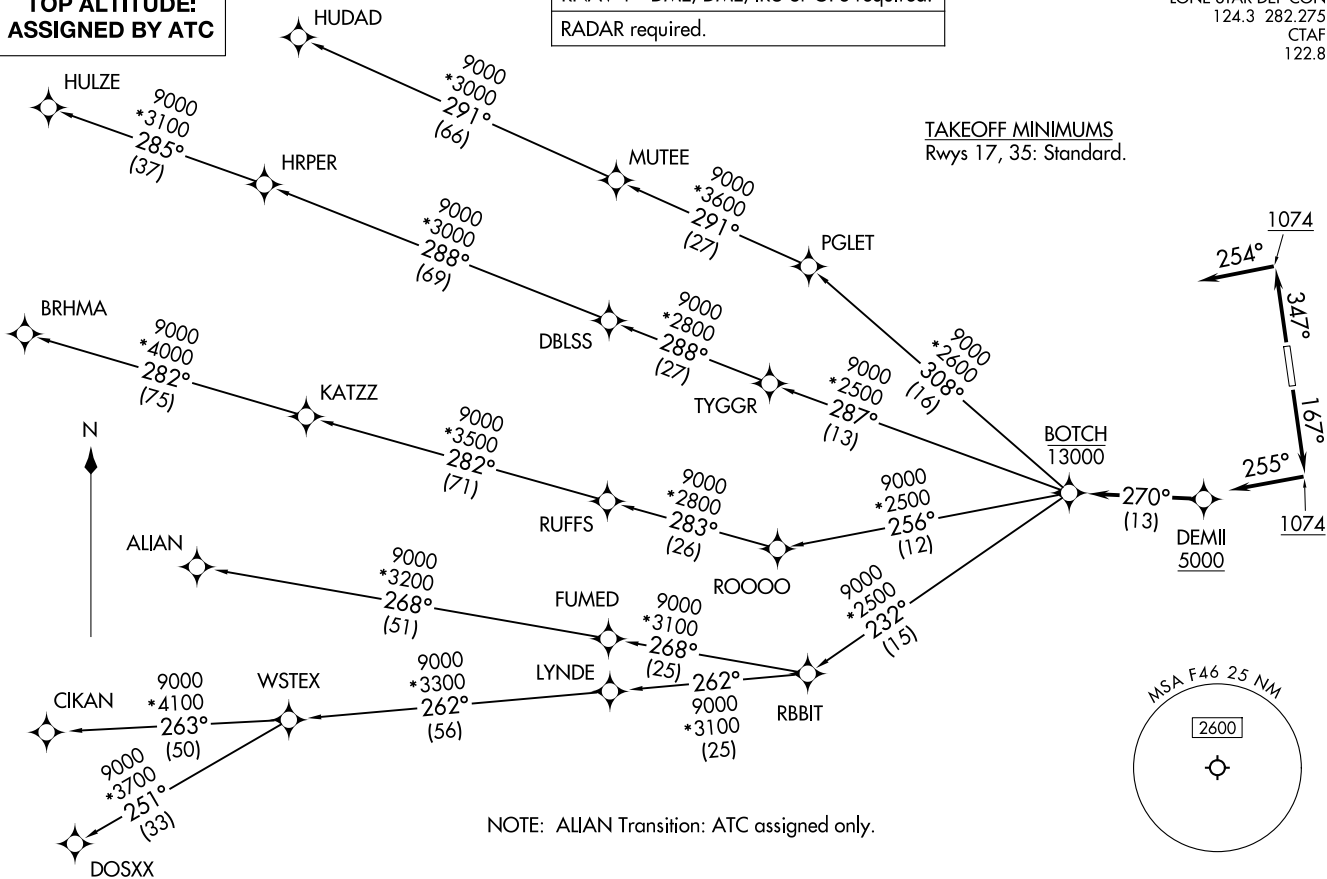
TAKEOFF MINIMUMS
Rwys 17, 35: Standard.

BOTCH TWO DEPARTURE (RNAV)
(BOTCH2.BOTCH) 14MAY26

(BOTCH2.BOTCH) 26134
BOTCH TWO DEPARTURE (RNAV)

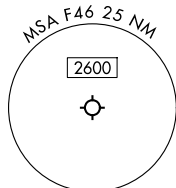
AL-323 (FAA)

RALPH M HALL/ROCKWALL MUNI (F46)
ROCKWALL, TEXAS



NOTE: ALIAN Transition: ATC assigned only.

(CONTINUED ON FOLLOWING PAGE)



NOTE: Chart not to scale.

ROCKWALL, TEXAS
RALPH M HALL/ROCKWALL MUNI (F46)

BOTCH TWO DEPARTURE (RNAV)

ROCKWALL, TEXAS



DEPARTURE ROUTE DESCRIPTION

TAKEOFF RUNWAY 17: Climb on heading 167° to 1074, then on heading 255° or as assigned by ATC, for vectors to cross DEMII at or above 5000, thence. . .

TAKEOFF RUNWAY 35: Climb on heading 347° to 1074, then on heading 254° or as assigned by ATC, for vectors to cross DEMII at or above 5000, thence. . .

. . . on track 270° to cross BOTCH at or below 13000, then on (transition). Maintain ATC assigned altitude, expect filed altitude 10 minutes after departure.

ALIAN TRANSITION (BOTCH2.ALIAN)

BRHMA TRANSITION (BOTCH2.BRHMA)

CIKAN TRANSITION (BOTCH2.CIKAN)

DOSXX TRANSITION (BOTCH2.DOSXX)

HUDAD TRANSITION (BOTCH2.HUDAD)

HULZE TRANSITION (BOTCH2.HULZE)

WSTEX TRANSITION (BOTCH2.WSTEX)

SC-2, 11 JUN 2026 to 09 JUL 2026

SC-2, 11 JUN 2026 to 09 JUL 2026