

WAAS CH 97416 W25A	APP CRS 252°	Rwy Ldg TDZE 643 Apt Elev 643	4000 643 643
--	------------------------	---	---

RNAV (GPS) RWY 25

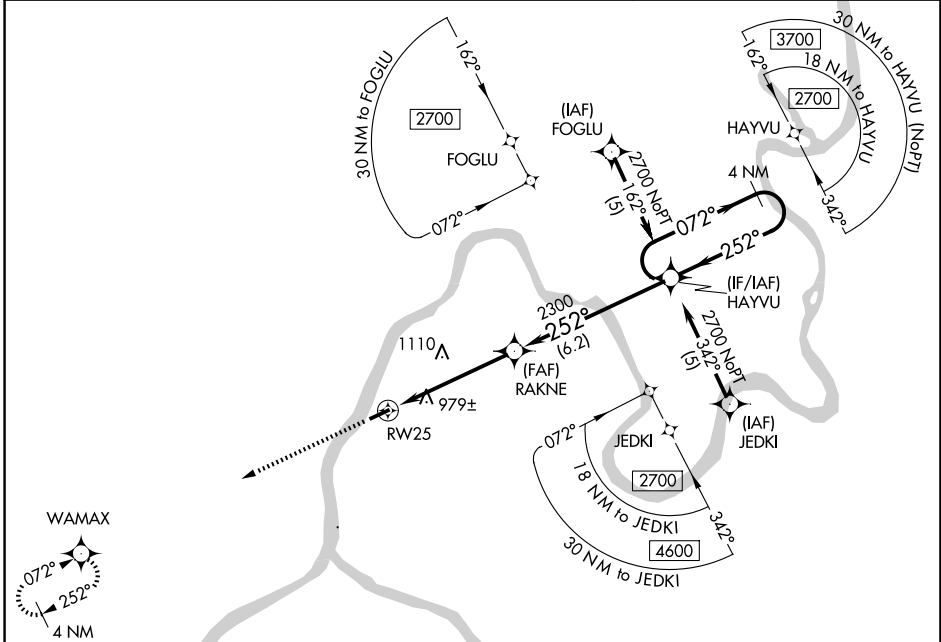
MASON COUNTY (3I2)

RNP APCH - GPS.

⚠ Circling NA NW of Rwy 7-25. Baro-VNAV NA when using UNI altimeter setting. For uncompensated Baro-VNAV systems, LNAV/VNAV NA below -16°C or above 47°C. Rwy 25 helicopter visibility reduction below 3/4 SM NA. When local altimeter setting not received, use UNI altimeter setting and increase all DA 61 feet and all MDA 80 feet, increase LPV all Cats visibility 1/4 mile and increase LNAV/VNAV all Cats visibility 1 mile. VDP NA when using UNI altimeter setting.

MISSED APPROACH:
Climb to 3200 direct WAMAX and hold.

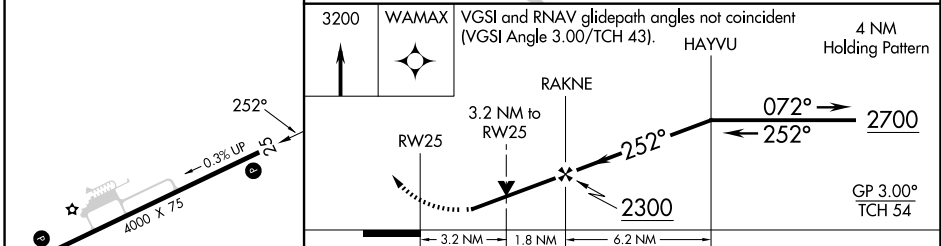
AWOS-3 119.675	HUNTINGTON APP CON 128.4 270.1	UNICOM 122.8 (CTAF) 0
--------------------------	--	---------------------------------



NE-4, 11 JUN 2026 to 09 JUL 2026

NE-4, 11 JUN 2026 to 09 JUL 2026

ELEV 643	TDZE 643
-----------------	-----------------



CATEGORY	A	B	C	D
LPV DA		1430-2 ³ / ₄	787 (800-2 ³ / ₄)	
LNAV/VNAV DA		1727-4	1084 (1100-4)	
LNAV MDA	1700-1 ¹ / ₄ 1057 (1100-1 ¹ / ₄)	1700-1 ¹ / ₂ 1057 (1100-1 ¹ / ₂)	1700-3	1057 (1100-3)
CIRCLING	1700-1 ¹ / ₄ 1057 (1100-1 ¹ / ₄)	1700-1 ¹ / ₂ 1057 (1100-1 ¹ / ₂)	1700-3	1057 (1100-3)

REIL Rws 7 and 25 **0**
MIRL Rwy 7-25 **0**