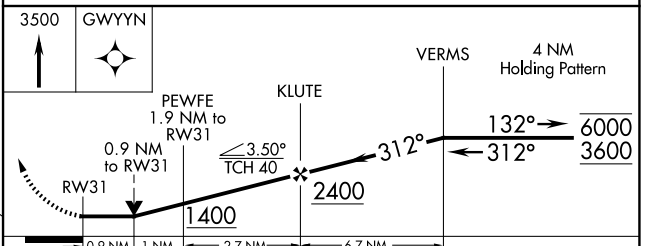
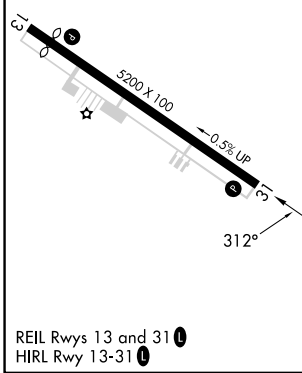
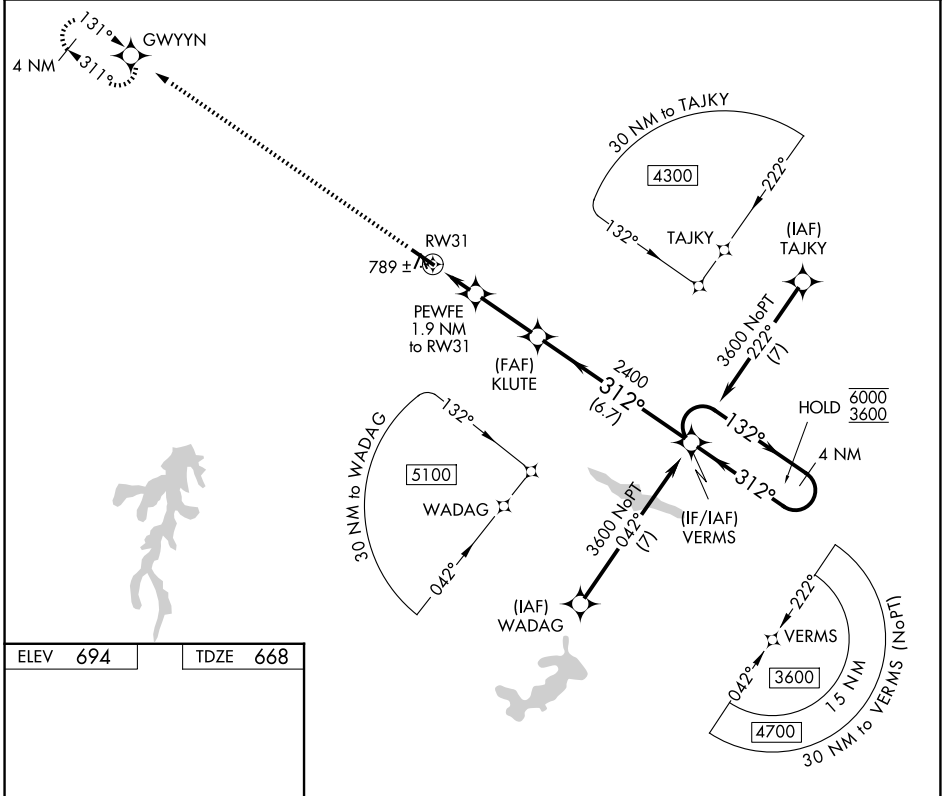


APP CRS	Rwy Ldg	5200
312°	TDZE	668
	Apt Elev	694

RNAV (GPS) RWY 31

ROCKINGHAM COUNTY NC SHILOH (SIF')

RNP APCH - GPS.		MISSED APPROACH: Climb to 3500 direct GWYYN and hold.
<p>▼ VDP NA when using GSO altimeter setting. ▲ Rwy 31 helicopter visibility reduction below ¾ SM NA.</p>		
AWOS-3 119.775	GREENSBORO APP CON 124.35 269.225	UNICOM 122.8 (CTAF) ①



CATEGORY	A	B	C	D
LNAV MDA	1080-1	412 (400-1)	1080-1/8	412 (400-1/8)
CIRCLING	1280-1 586 (600-1)	1340-1 646 (700-1)	1360-1 3/4 666 (700-1 3/4)	1440-2 1/2 746 (800-2 1/2)

SE-2, 11 JUN 2026 to 09 JUL 2026

SE-2, 11 JUN 2026 to 09 JUL 2026