

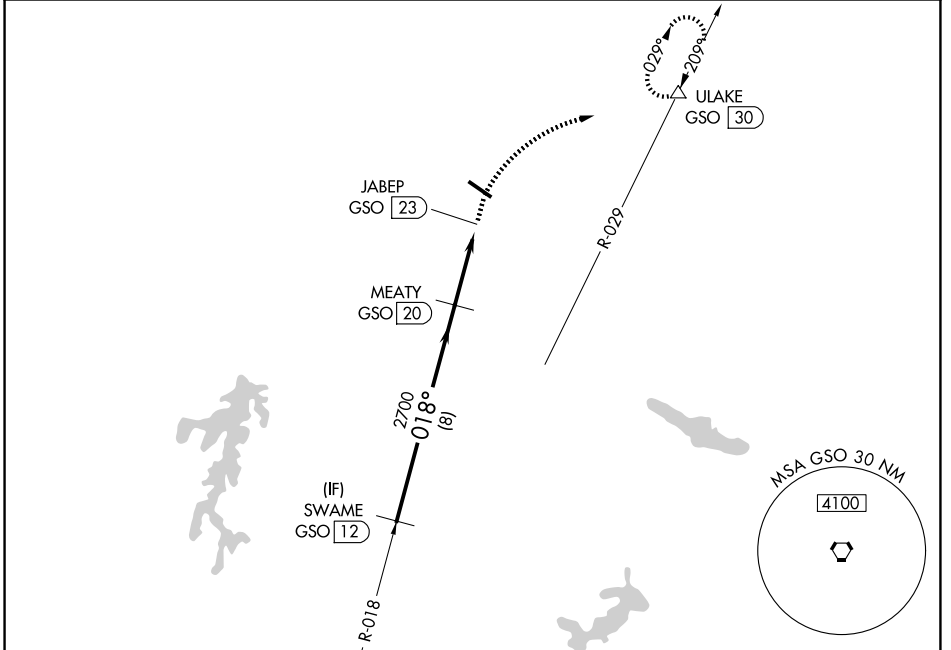
VORTAC GSO <b>116.2</b> Chan <b>109</b>	APP CRS <b>018°</b>	Rwy Ldg TDZE Apt Elev <b>N/A</b> <b>N/A</b> <b>694</b>
---	------------------------	--

# VOR-A

ROCKINGHAM COUNTY NC SHILOH (SIF')

DME required.	MISSED APPROACH: Climb to 1300 then climbing right turn to 3100 on heading 077° and GSO VORTAC R-029 to ULAKE/GSO 30 DME and hold, continue climb-in-hold to 3100.
---------------	--

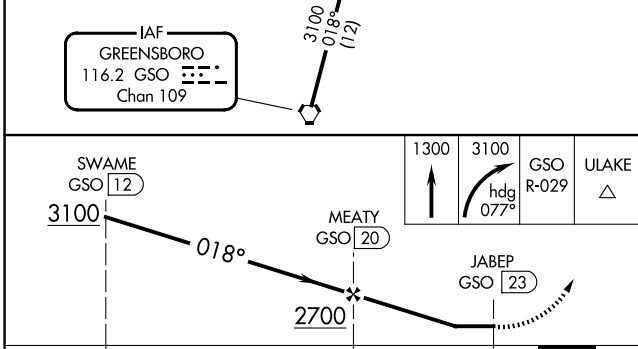
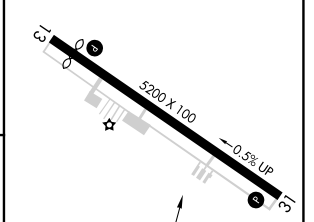
AWOS-3 <b>119.775</b>	GREENSBORO APP CON <b>124.35 269.225</b>	UNICOM <b>122.8 (CTAF)</b>
--------------------------	---	-------------------------------



SE-2, 11 JUN 2026 to 09 JUL 2026

SE-2, 11 JUN 2026 to 09 JUL 2026

ELEV 694	REIL Rwy 13 and 31	HIRL Rwy 13-31
----------	--------------------	----------------



CATEGORY	FAF to MAP 3 NM			
CIRCLING	1280-1½ 586 (600-1½)	1340-1½ 646 (700-1½)	1340-1¾ 646 (700-1¾)	1440-2½ 746 (800-2½)
	Knots: 60, 90, 120, 150, 180	Min:Sec: 3:00, 2:00, 1:30, 1:12, 1:00		