

WAAS CH 40306 W36A	APP CRS 004°	Rwy Ldg 5002 TDZE 829 Apt Elev 842
--	------------------------	---

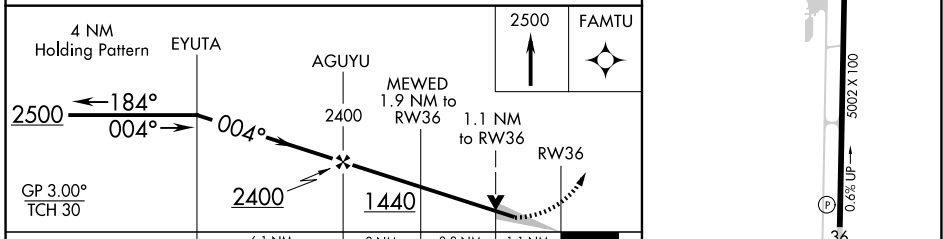
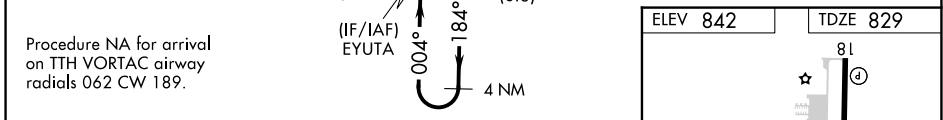
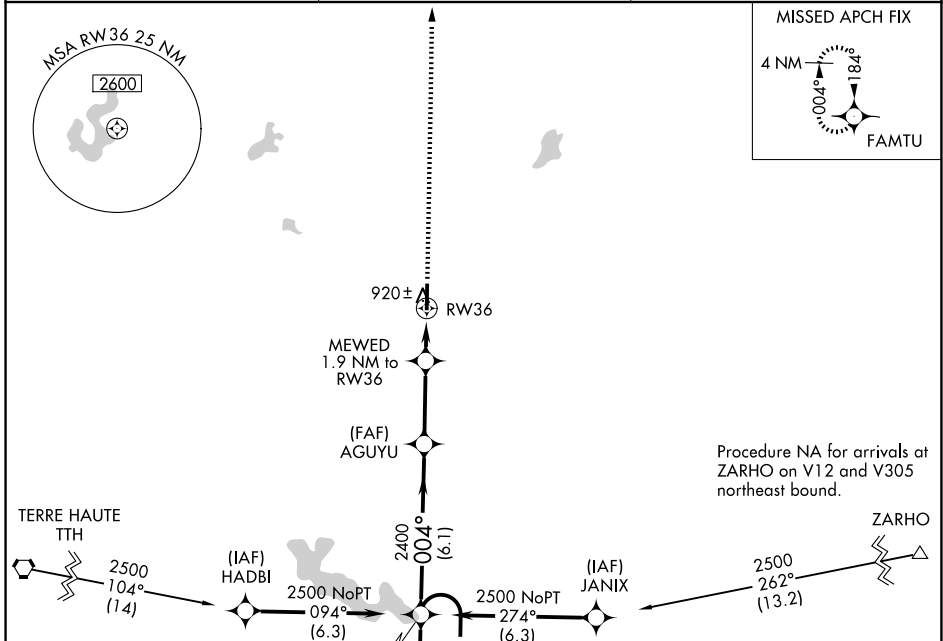
RNAV (GPS) RWY 36

PUTNAM COUNTY RGNL (GPC)

▽ For uncompensated Baro-VNAV systems, LNAV/VNAV NA below -16°C or above 54°C.
DME/DME RNP-0.3 NA.

MISSED APPROACH:
Climb to 2500 direct
FAMTU and hold.

AWOS-3PT 118.125	INDIANAPOLIS APP CON 119.05 317.8	UNICOM 122.8 (CTAF) ①
----------------------------	---	---------------------------------



	A	B	C	D
CATEGORY				
LPV DA		1079-7/8	250 (300-7/8)	
LNAV/VNAV DA		1116-1	287 (300-1)	
LNAV MDA		1180-1	351 (400-1)	
CIRCLING	1280-1 438 (500-1)	1400-1 558 (600-1)	1480-1 3/4 638 (700-1 3/4)	1600-2 1/2 758 (800-2 1/2)

MIRL Rwy 18-36 ①
REIL Rwy 18

EC-2, 11 JUN 2026 to 09 JUL 2026

EC-2, 11 JUN 2026 to 09 JUL 2026