

APP CRS 354°	Rwy Idg 2722
	TDZE 416
	Apt Elev 416

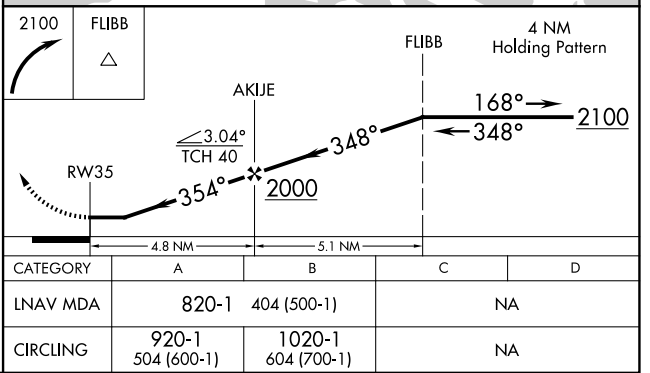
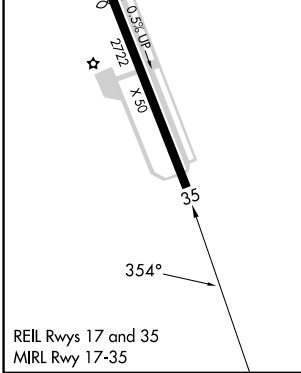
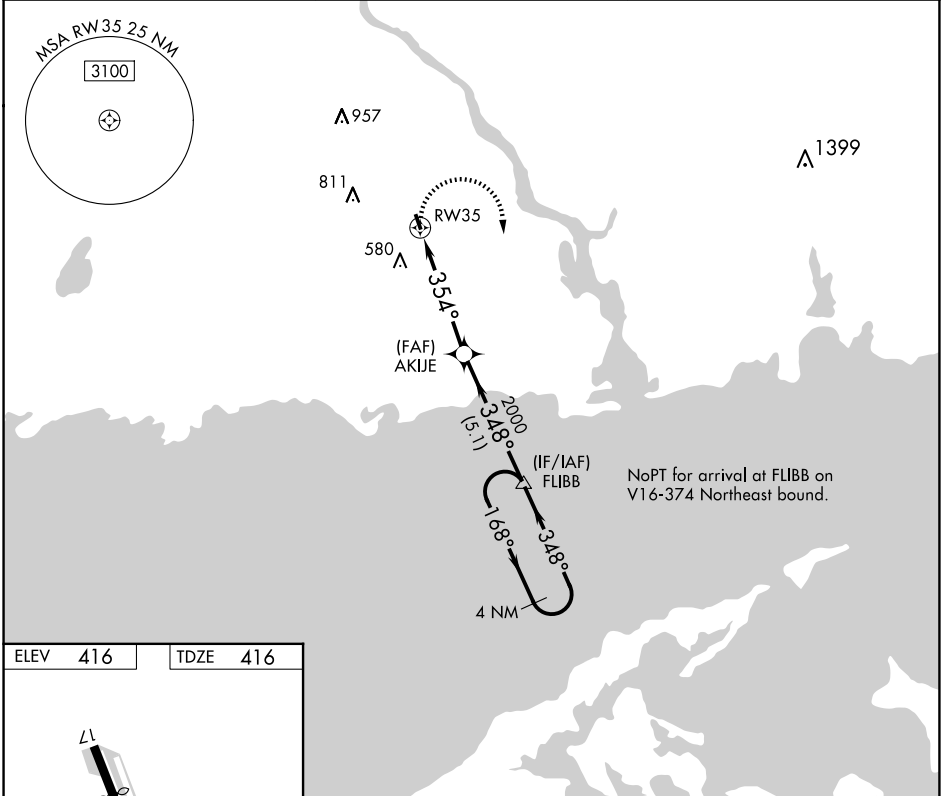
RNAV (GPS) RWY 35

CHESTER (SNC)

⚠ DME/DME RNP-0.3 NA. Procedure NA at night. Helicopter visibility reduction below 1 SM NA. When local altimeter setting not received, use Meriden altimeter setting and increase all MDA 100 feet.

⚠ MISSED APPROACH: Climbing right turn to 2100 direct FLIBB and hold.

AWOS-3 118.325	NEW YORK APP CON 124.075 343.65	UNICOM 122.725 (CTAF)
--------------------------	---	---------------------------------



NE-1, 11 JUN 2026 to 09 JUL 2026

NE-1, 11 JUN 2026 to 09 JUL 2026