

WAAS CH <b>40335</b> <b>W22A</b>	APP CRS <b>220°</b>	Rwy Idg <b>5000</b> TDZE <b>615</b> Apt Elev <b>615</b>
--	------------------------	---

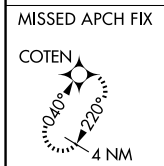
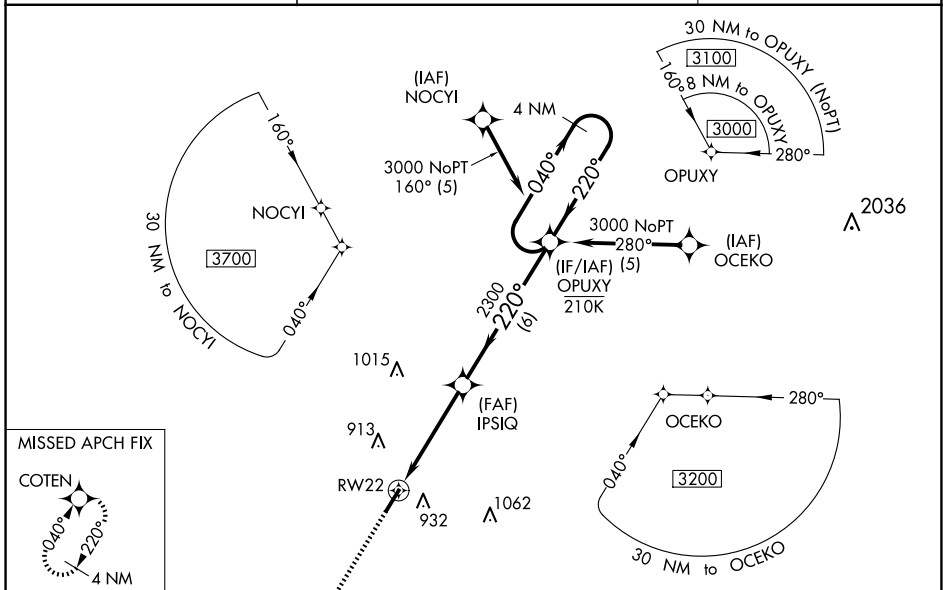
# RNAV (GPS) RWY 22

SILER CITY MUNI (SCR)

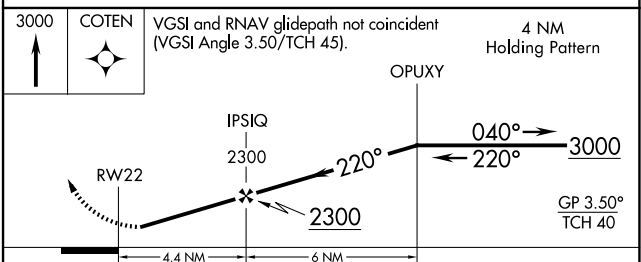
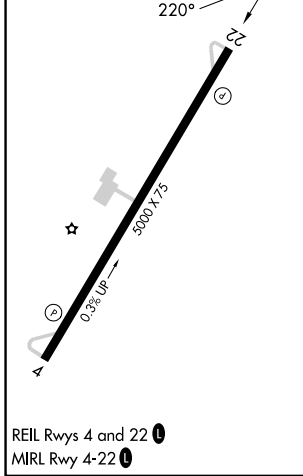
**⚠** For uncompensated Baro-VNAV systems, LNAV/VNAV NA below -16°C (4°F) or above 54°C (130°F). DME/DME RNP-0.3 NA. Procedure NA at night. Baro-VNAV NA when using Asheboro altimeter setting. Rwy 4, 22 helicopter visibility reduction below 1 SM NA. When local altimeter setting not received, use Asheboro altimeter setting: increase all DA 53 feet and all MDA 60 feet; increase LPV all Cats, LNAV/VNAV all Cats, and LNAV Cat C visibilities 1/8 mile, increase Circling Cat C visibility 1/4 mile.

**MISSED APPROACH:**  
Climb to 3000 direct COTEN and hold.

AWOS-3 <b>125.775</b>	GREENSBORO APP CON <b>126.6 327.075</b>	UNICOM <b>122.7 (CTAF) 0</b>
--------------------------	--	---------------------------------



ELEV 615	TDZE 615
----------	----------



CATEGORY	A	B	C	D
LPV DA	954-1	339 (400-1)		NA
LNAV/VNAV DA	1140-1 <sup>5</sup> / <sub>8</sub>	525 (600-1 <sup>5</sup> / <sub>8</sub> )		NA
LNAV MDA	1160-1	545 (600-1)	1160-1 <sup>5</sup> / <sub>8</sub> 545 (600-1 <sup>5</sup> / <sub>8</sub> )	NA
<b>C</b> CIRCLING	1240-1	625 (700-1)	1240-1 <sup>3</sup> / <sub>4</sub> 625 (700-1 <sup>3</sup> / <sub>4</sub> )	NA

SE-2, 11 JUN 2026 to 09 JUL 2026

SE-2, 11 JUN 2026 to 09 JUL 2026