

| | | |
|-------------|----------|-------------|
| APP CRS | Rwy Idg | 4499 |
| 339° | TDZE | 157 |
| | APR Elev | 160 |

RNAV (GPS) RWY 33

WILSON INDUSTRIAL AIR CENTER (W03)

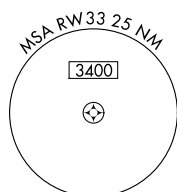
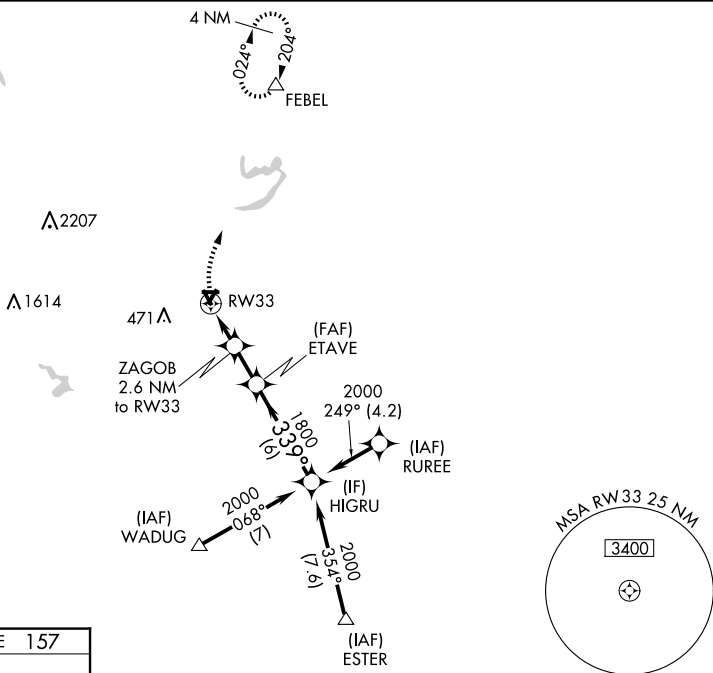
RNP APCH.

▼ Obtain local altimeter setting on CTAF; when not received, use Rocky Mount altimeter setting. Straight-in Rwy 33 NA at night, Circling Rwy 9, 15, 27, 33 NA at night. Rwy 33 helicopter visibility reduction below 1 SM NA.

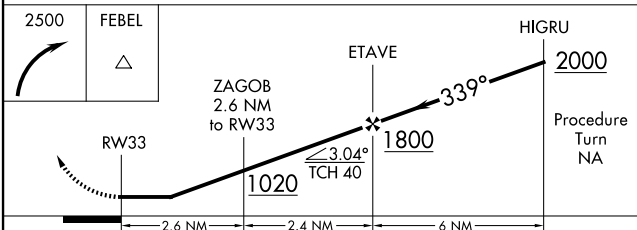
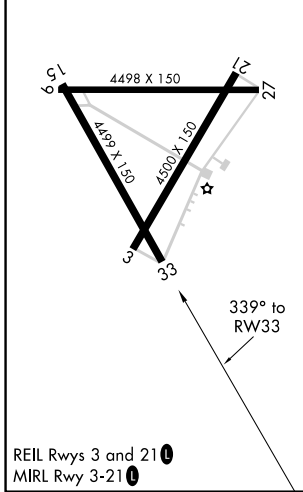
MISSED APPROACH: Climbing right turn to 2500 direct FEBEL WP and hold.

WASHINGTON CENTER
123.85 279.65

UNICOM
123.0 (CTAF) 0



| | |
|----------|----------|
| ELEV 160 | TDZE 157 |
|----------|----------|



| CATEGORY | A | B | C | D |
|--|-------|-------------|------------------------|------------------------|
| LNAV MDA | 640-1 | 483 (500-1) | 640-1¼ 483 (500-1¼) | 640-1½ 483 (500-1½) |
| CIRCLING | 660-1 | 500 (500-1) | 780-1¾ 620 (700-1¾) | 780-2 620 (700-2) |
| ROCKY MOUNT ALTIMETER SETTING MINIMUMS | | | | |
| LNAV MDA | 660-1 | 503 (500-1) | 660-1½ | 503 (500-1½) |
| CIRCLING | 680-1 | 520 (600-1) | 800-1¾ 640 (700-1¾) | 800-2 640 (700-2) |

SE-2, 11 JUN 2026 to 09 JUL 2026

SE-2, 11 JUN 2026 to 09 JUL 2026