

WAAS CH <b>50327</b> <b>W27A</b>	APP CRS <b>268°</b>	Rwy Ldg TDZE Apt Elev	<b>4095</b> <b>1015</b> <b>1021</b>
--	------------------------	-----------------------------	---

# RNAV (GPS) RWY 27

UNION COUNTY (MRT)

RNP APCH - GPS.

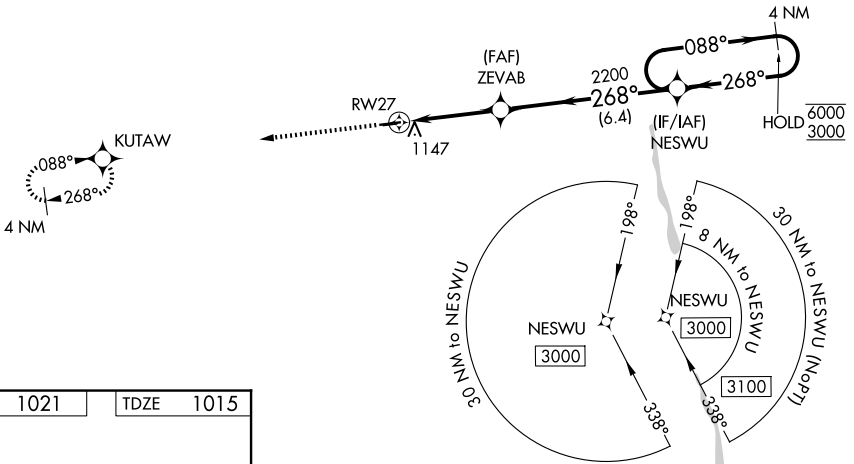
- ▼ Circling NA to Rwys 8 and 26. Rwy 27 helicopter visibility reduction below 1 SM NA.
- ▲ Straight-in Rwy 27 at night, Circling Rwy 27 at night, operational VGSI required, remain on or above VGSI glidepath until threshold.

MISSED APPROACH: Climb to 3000 direct KUTAW and hold.

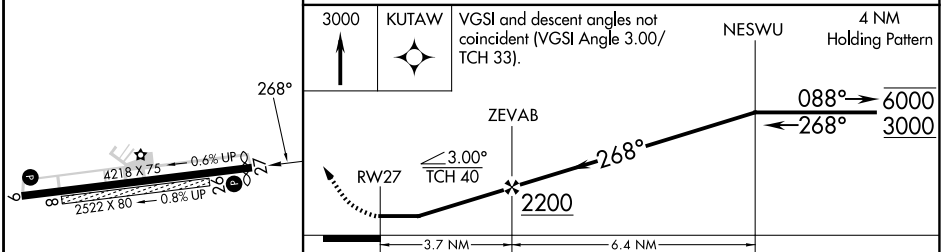
AWOS-3PT  
**126.5**

COLUMBUS APP CON  
**125.95 317.775**

UNICOM  
**123.05 (CTAF)**



ELEV 1021	TDZE 1015
-----------	-----------



3000	KUTAW	VGSI and descent angles not coincident (VGSI Angle 3.00°/TCH 33).	NESWU	4 NM Holding Pattern
↑	✧			
RWY 27		ZEVAB	NESWU	
3.7 NM		6.4 NM		
CATEGORY	A	B	C	D
LP MDA	1360-1		345 (400-1)	
LNAV MDA	1400-1	385 (400-1)	1400-1½	385 (400-1½)
CIRCLING	1520-1 499 (500-1)	1540-1 519 (600-1)	1620-1½ 599 (600-1½)	1620-2 599 (600-2)

MIRL Rwy 9-27  
REIL Rwys 9 and 27

EC-2, 11 JUN 2026 to 09 JUL 2026

EC-2, 11 JUN 2026 to 09 JUL 2026