

WAAS CH 82033 W22A	APP CRS 223°	Rwy Ldg TDZE Apt Elev	3895 1003 1008
--	------------------------	-----------------------------	---

RNAV (GPS) RWY 22

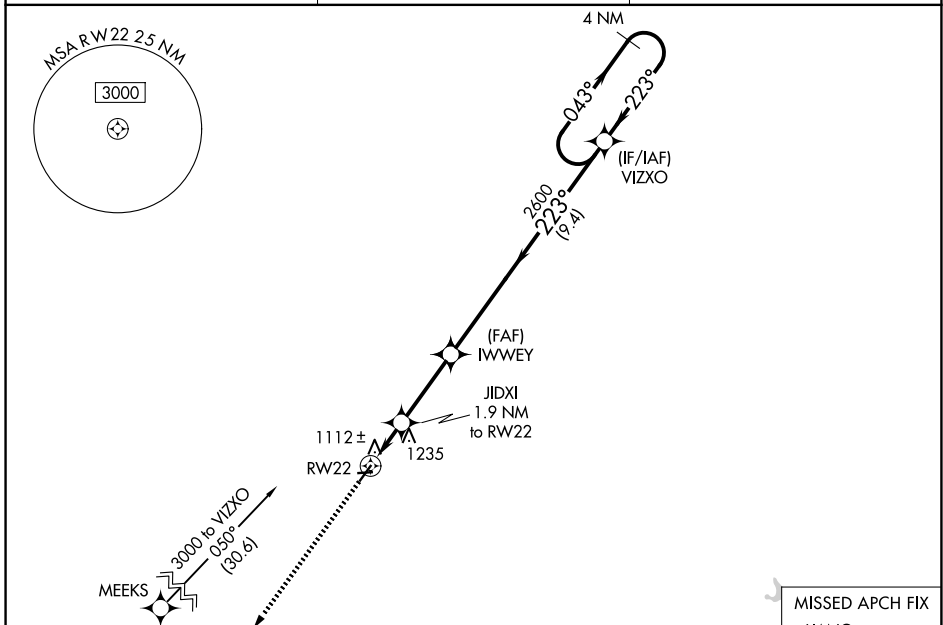
PORT BUCYRUS/CRAWFORD COUNTY (17G)

RNP APCH.

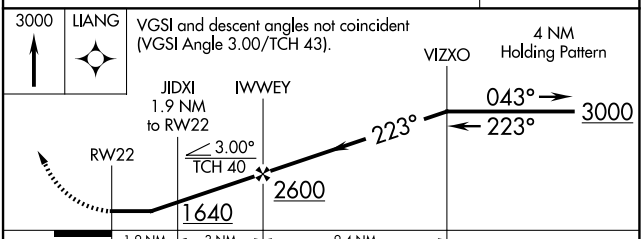
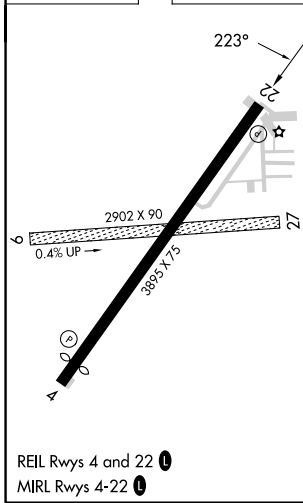
⚠️ Circling NA to Rwy 9 and 27. Rwy 22 helicopter visibility reduction below 1 SM NA. Straight-in and Circling Rwy 22 NA at night. When local altimeter setting not received, use Mansfield altimeter setting; increase all MDA 100 feet and visibility Cat C 3/8 SM.

MISSED APPROACH: Climb to 3000 direct LIANG and hold.

AWOS-3 126.625	CLEVELAND APP CON ★ 128.35 360.65	UNICOM 122.8 (CTAF) 0
--------------------------	---	---------------------------------



ELEV 1008	TDZE 1003
-----------	-----------



CATEGORY	A	B	C	D
LP MDA	1380-1 377 (400-1)			NA
LNAV MDA	1500-1	497 (500-1)	1500-1 3/8 497 (500-1 3/8)	NA
CIRCLING	1500-1 492 (500-1)	1540-1 532 (600-1)	1700-2 692 (700-2)	NA

EC-2, 11 JUN 2026 to 09 JUL 2026

EC-2, 11 JUN 2026 to 09 JUL 2026