

WAAS CH <b>57930</b> <b>W22A</b>	APP CRS <b>220°</b>	Rwy Idg TDZE <b>1171</b> Apt Elev <b>1171</b>	<b>3600</b>
--	------------------------	---	-------------

# RNAV (GPS) RWY 22

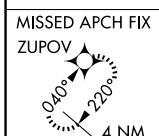
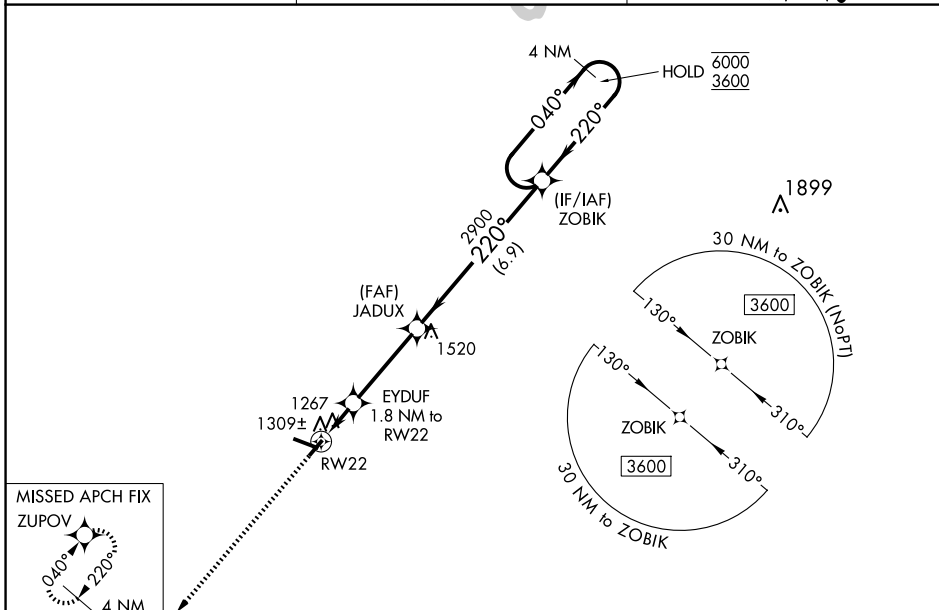
IOWA COUNTY (MR.J)

RNP APCH - GPS

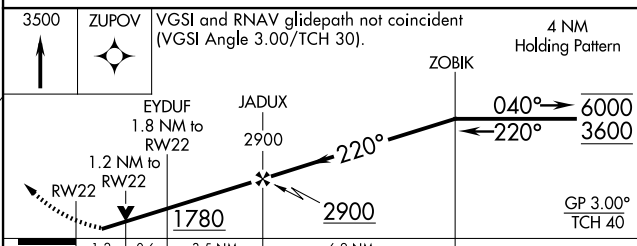
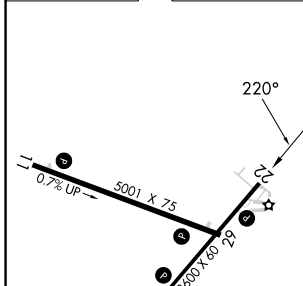
**⚠** Baro-VNAV and VDP NA when using Platteville altimeter setting. For uncompensated Baro-VNAV systems, LNAV/VNAV NA below -17°C or above 54°C. Rwy 22 helicopter visibility reduction below ¾ SM NA. When local altimeter setting not received, use Platteville altimeter setting and increase LPV DA to 1476 feet, increase LNAV/VNAV DA to 1534 feet, increase all MDAs 60 feet, and LNAV visibility Cat C ¼ SM.

**MISSED APPROACH:**  
Climb to 3500 direct ZUPOV and hold.

AWOS-3 <b>118.525</b>	CHICAGO CENTER <b>133.95 281.4</b>	UNICOM <b>122.8 (CTAF) 0</b>
--------------------------	---------------------------------------	---------------------------------



ELEV 1171	TDZE 1171
-----------	-----------



CATEGORY	A	B	C	D
LPV DA	1421-1 250 (300-1)			NA
LNAV/VNAV DA	1479-1 308 (400-1)			NA
LNAV MDA	1580-1	409 (500-1)	1580-1 1/8 409 (500-1 1/8)	NA
CIRCLING	1620-1 449 (500-1)	1640-1 469 (500-1)	1640-1 1/2 469 (500-1 1/2)	NA

MIRL Rwy 4-22 and 11-29

EC-3, 11 JUN 2026 to 09 JUL 2026

EC-3, 11 JUN 2026 to 09 JUL 2026