

WAAS CH 82330 W29A	APP CRS 291°	Rwy Idg TDZE Apt Elev	5001 1164 1171
--	------------------------	-----------------------------	---

RNAV (GPS) RWY 29

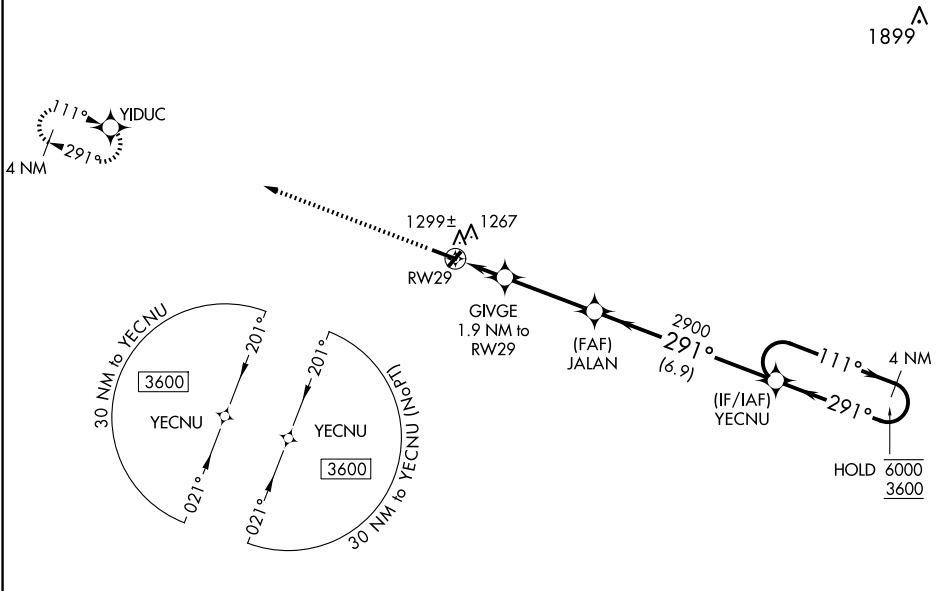
IOWA COUNTY (MR.J)

RNP APCH - GPS.

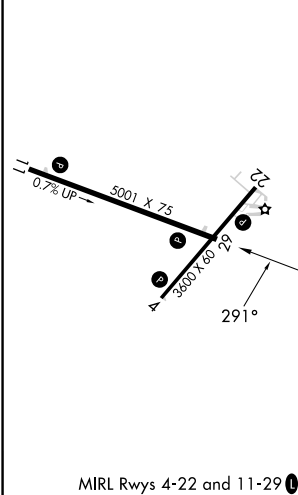
⚠ Baro-VNAV and VDP NA when using Platteville altimeter setting. For uncompensated Baro-VNAV systems, LNAV/VNAV NA below -17°C or above 54°C. When local altimeter setting not received, use Platteville altimeter setting and increase LPV DA to 1469 feet; increase LNAV/VNAV DA to 1524 feet; increase all MDAs 60 feet and LNAV visibility Cat C ¼ SM.

MISSED APPROACH:
Climb to 3500 direct YIDUC and hold.

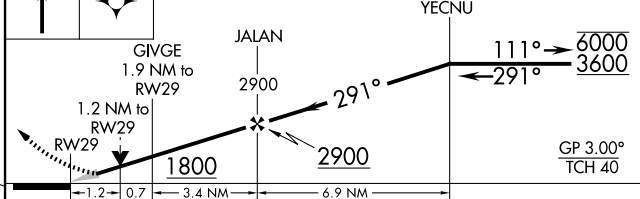
AWOS-3 118.525	CHICAGO CENTER 133.95 281.4	UNICOM 122.8 (CTAF) 0
--------------------------	---------------------------------------	---------------------------------



ELEV 1171	TDZE 1164
-----------	-----------



3500 YIDUC VGSI and RNAV glidepath not coincident (VGSI Angle 3.00/TCH 44). 4 NM Holding Pattern



CATEGORY	A	B	C	D
LPV DA	1414-1	250 (300-1)		NA
LNAV/VNAV DA	1469-1	305 (300-1)		NA
LNAV MDA	1580-1	416 (500-1)	1580-1½ 416 (500-1½)	NA
CIRCLING	1620-1 449 (500-1)	1640-1 469 (500-1)	1640-1½ 469 (500-1½)	NA

EC-3, 11 JUN 2026 to 09 JUL 2026

EC-3, 11 JUN 2026 to 09 JUL 2026