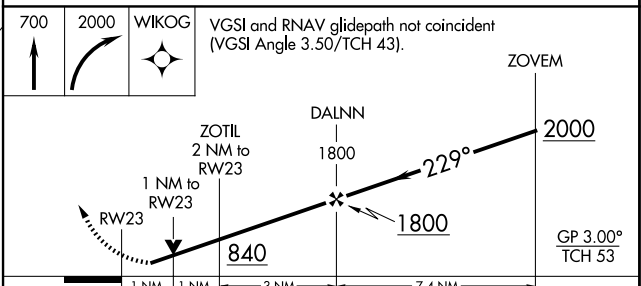
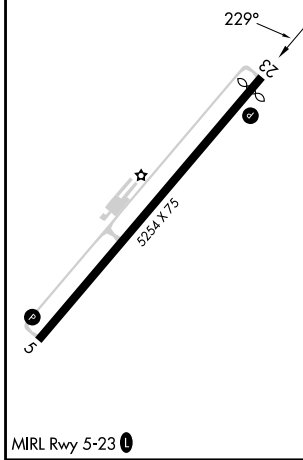
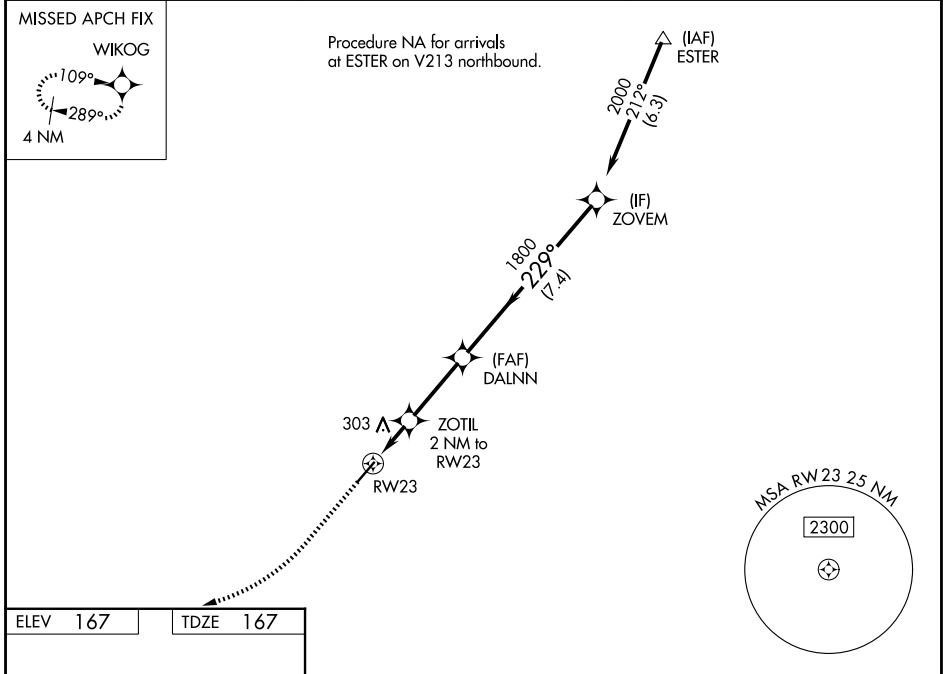


WAAS CH 90331 W23A	APP CRS 229°	Rwy Ldg TDZE 167 Apt Elev 167	5000
--	------------------------	---	-------------

RNAV (GPS) RWY 23

MOUNT OLIVE MUNI (W40)

RNP APCH - GPS.		MISSED APPROACH: Climb to 700 then climbing right turn to 2000 direct WIKOG and hold.
AWOS-3P 120.075	SEYMOUR JOHNSON APP CON* 119.7 273.6	UNICOM 122.8 (CTAF) 0



CATEGORY	A	B	C	D
LPV DA	497-1 330 (400-1)			NA
LNAV MDA	580-1	413 (500-1)	580-1 ¹ / ₈ 413 (500-1 ¹ / ₈)	NA
CIRCLING	700-1	533 (600-1)	720-1 ¹ / ₂ 553 (600-1 ¹ / ₂)	NA

SE-2, 11 JUN 2026 to 09 JUL 2026

SE-2, 11 JUN 2026 to 09 JUL 2026