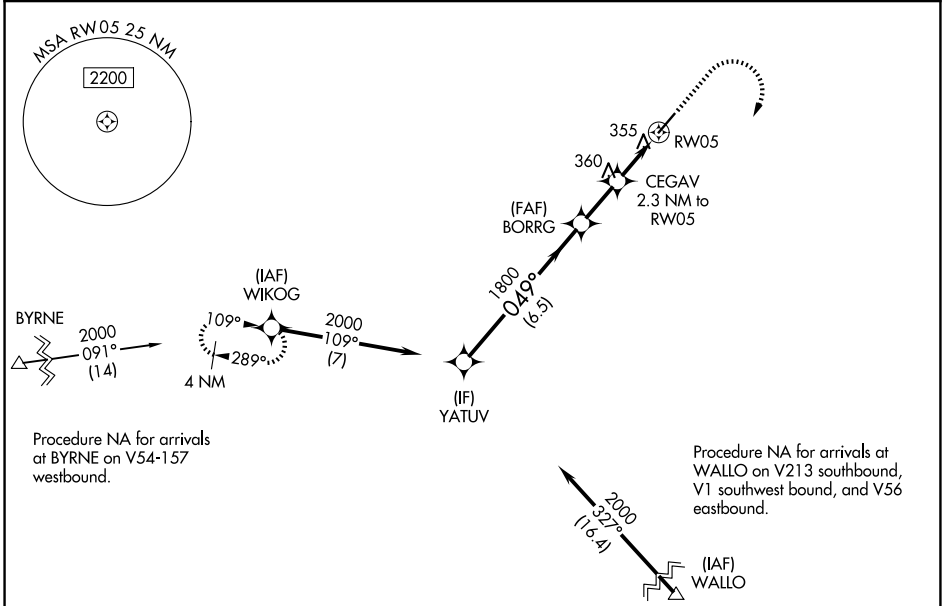


WAAS CH 69431 W05A	APP CRS 049°	Rwy Ldg TDZE 166 Apt Elev 166	5254
--	------------------------	---	-------------

RNAV (GPS) RWY 5

MOUNT OLIVE MUNI (W40)

RNP APCH - GPS.		MISSED APPROACH: Climb to 900 then climbing right turn to 2000 direct WIKOG and hold.
<p>▼ ▲</p> <p>Rwy 5 helicopter visibility reduction below 3/4 SM NA. When local altimeter setting not received, use Goldsboro altimeter setting.</p>		
AWOS-3P 120.075	SEYMOUR JOHNSON APP CON* 119.7 273.6	UNICOM 122.8 (CTAF) 0



SE-2, 11 JUN 2026 to 09 JUL 2026

SE-2, 11 JUN 2026 to 09 JUL 2026

ELEV 166	TDZE 166
----------	----------

VGSI and RNAV glidepath not coincident (VGSI Angle 3.50/TCH 43).

YATUV 2000
BORRG 1800
CEGAV 2.3 NM to RW05
RW05
GP 3.45° TCH 60
049°
1800
1060
6.5 NM
2 NM
2.3 NM

900	2000	WIKOG
-----	------	-------

CATEGORY	A	B	C	D
LPV DA	625-1 ³ / ₈	459 (500-1 ³ / ₈)		NA
RNAV MDA	640-1	474 (500-1)	640-1 ³ / ₈ 474 (500-1 ³ / ₈)	NA
CIRCLING	700-1	534 (600-1)	720-1 ¹ / ₂ 554 (600-1 ¹ / ₂)	NA

MIRL Rwy 5-23 0