

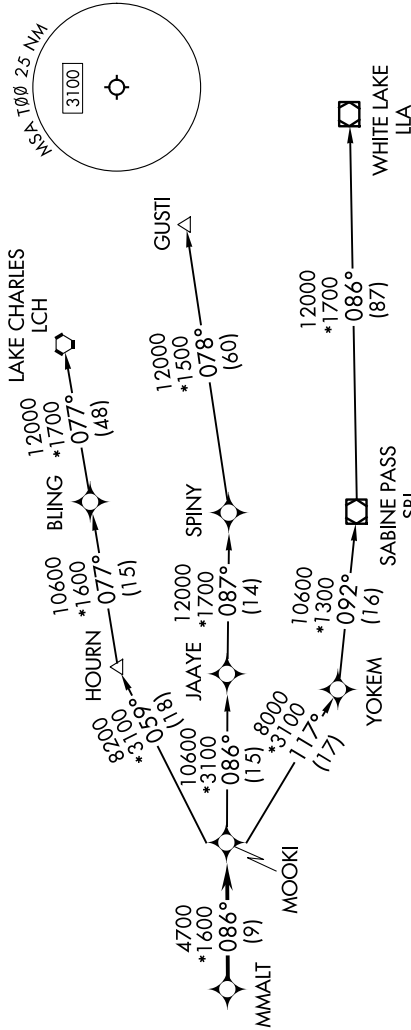
# MMALT SEVEN DEPARTURE (RNAV)

9200 100 60 01 9200 2020 000 11 '9-C5

HOUSTON DEP CON  
134.45 284.0  
CTAF  
122.9

RNAV 1 - DME/DME/IRU or GPS.  
RADAR required.

TOP ALTITUDE:  
ASSIGNED BY ATC



NOTE: GUSTI and LCH Transitions ATC assigned only for aircraft departing AXH, EFD, GLS, HPY, IWS, LBX, LVJ, SGR, TIME, T00, T41 and 54T.

## DEPARTURE ROUTE DESCRIPTION

TAKEOFF RUNWAY 12: Climb on heading 124° to 540, for RADAR vectors to MMALT, thence . . . . .  
 TAKEOFF RUNWAY 30: Climb on heading 304° to 540, for RADAR vectors to MMALT, thence . . . . .  
 . . . . . on track 086° to MOOKI, then on (transition). Maintain ATC assigned altitude.  
 Expect filed altitude 10 minutes after departure.

GUSTI TRANSITION (MMALT7.GUSTI)  
 LAKE CHARLES TRANSITION (MMALT7.LCH)  
 WHITE LAKE TRANSITION (MMALT7.LLA)

TAKEOFF MINIMUMS  
 Rwy 17, 35: NA-Environmental.  
 Rwy 12, 30: Standard with minimum  
 climb of 500'/NM to 540.

NOTE: Chart not to scale.

# MMALT SEVEN DEPARTURE (RNAV)