

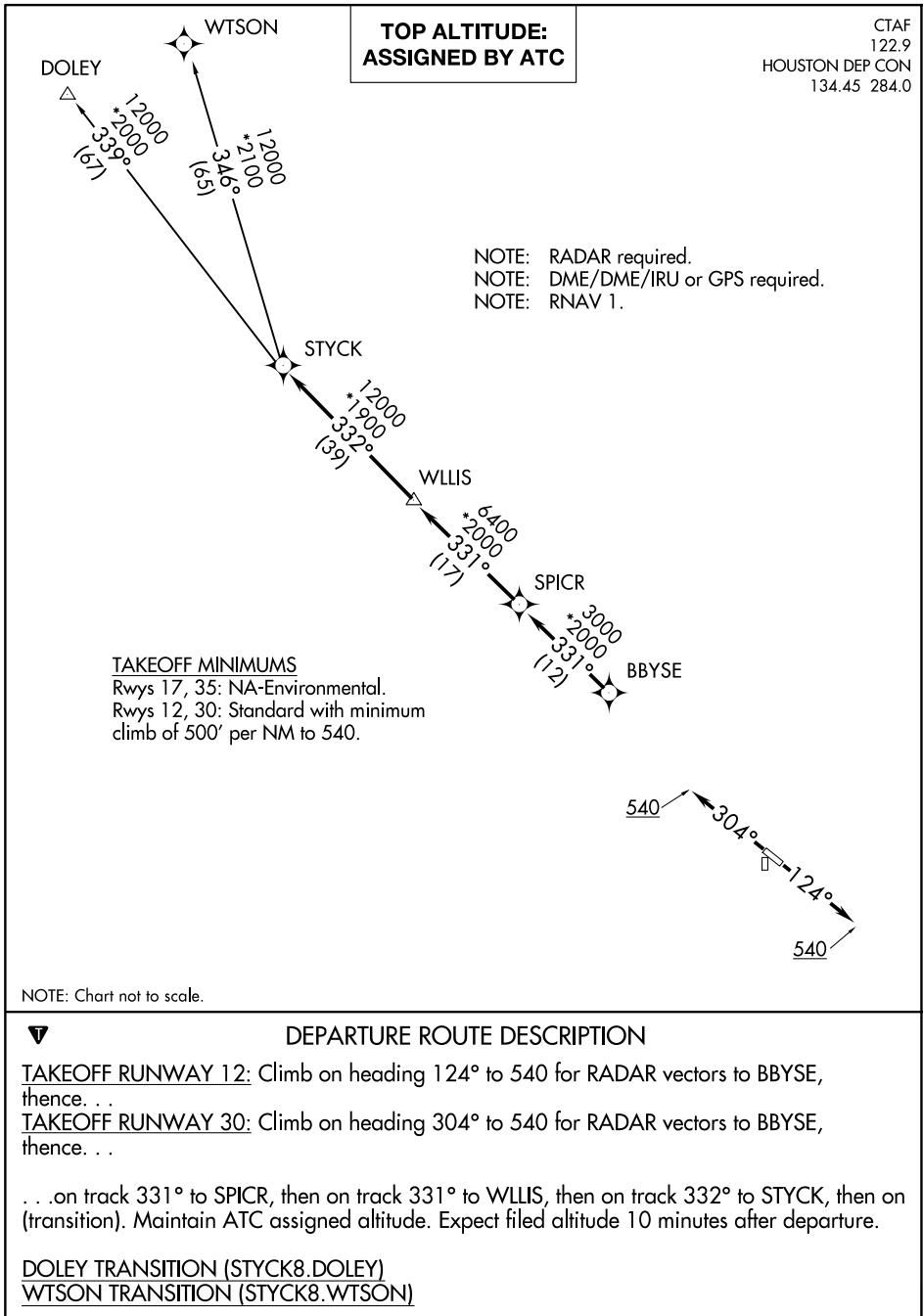
(STYCK8.STYCK) 21280

AL-6395 (FAA)

CHAMBERS COUNTY (T00)

STYCK EIGHT DEPARTURE (RNAV)

ANAHUAC, TEXAS



SC-5, 11 JUN 2026 to 09 JUL 2026

SC-5, 11 JUN 2026 to 09 JUL 2026

STYCK EIGHT DEPARTURE (RNAV)

(STYCK8.STYCK) 07OCT21

ANAHUAC, TEXAS

CHAMBERS COUNTY (T00)