

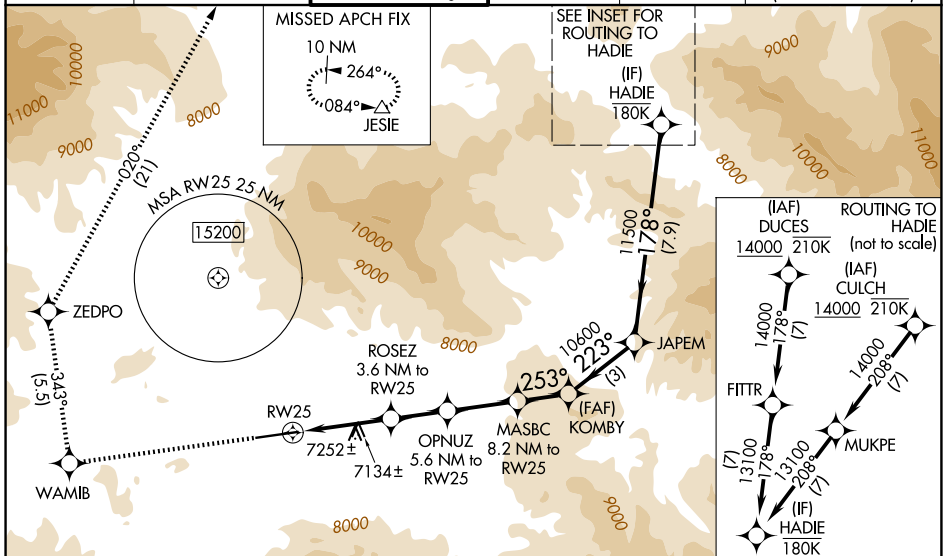
WAAS CH 75965 W25B	APP CRS 253°	Rwy Ldg TDZE Apt Elev	8000 6540 6547
--	------------------------	-----------------------------	---

RNAV (GPS) Y RWY 25

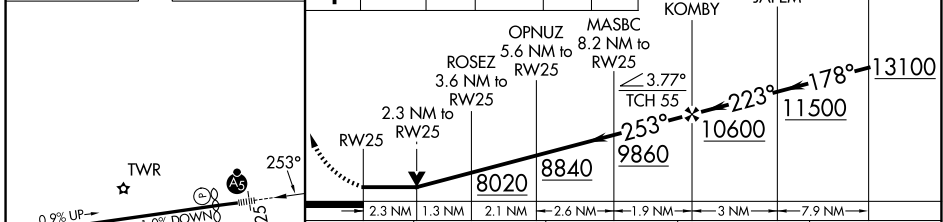
EAGLE COUNTY RGNL (EGE)

RNP APCH-GPS.	<p>When local altimeter setting not received, procedure NA. Rwy 25 helicopter visibility reduction below ¾ SM NA. Circling NA south of Rwy 25-7. Circling Rwy 7 NA at night. Inop table does not apply to LP and LNAV Cat C. For inop ALS, increase LP (*) Cat A visibility to 1 SM and Cat C visibility to 2½ SM.</p>	MALS R	<p>MISSED APPROACH: (Do not exceed 165K until ZEDPO) Climb to 15000 on the RNAV missed approach route to JESIE and hold, continue climb in-hold to 15000. *Missed approach requires minimum climb of 318 feet per NM to 8700. #Missed approach requires minimum climb of 288 feet per NM to 8900.</p>
---------------	--	--------	---

ATIS 135.575	DENVER CENTER 128.65 282.2	EAGLE TOWER * 119.8 (CTAF) 0	GND CON 121.8	CLNC DEL 124.75	DENVER CLNC DEL 124.75 (When tower closed)
------------------------	--------------------------------------	--	-------------------------	---------------------------	---



ELEV 6547	D	TDZE 6540	↑	WAMIB	ZEDPO	JESIE	VGSI and descent angles not coincident (VGSI Angle 3.00/TCH 55).
			tr 343°	tr 020°	△		



	2.3 NM	1.3 NM	2.1 NM	2.6 NM	1.9 NM	3 NM	7.9 NM
CATEGORY	A		B		C		D
LP MDA*	7320-¾		780 (800-¾)		7320-1¾ 780 (800-1¾)		NA
LP MDA	7780-¾ 1240 (1300-¾)		7800-1 1260 (1300-1)		7820-3 1280 (1300-3)		NA
LNAV MDA#	7580-¾ 1040 (1100-¾)		7580-1 1040 (1100-1)		7580-2½ 1040 (1100-2½)		NA
LNAV MDA	7940-¾ 1400 (1400-¾)		7960-1 1420 (1500-1)		7980-3 1440 (1500-3)		NA
CIRCLING	7940-1½ 1393 (1400-1½)		8020-1½ 1473 (1500-1½)		8580-3 2033 (2100-3)		NA

SW-1, 11 JUN 2026 to 09 JUL 2026

SW-1, 11 JUN 2026 to 09 JUL 2026