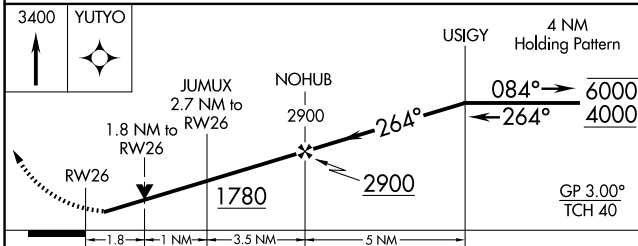
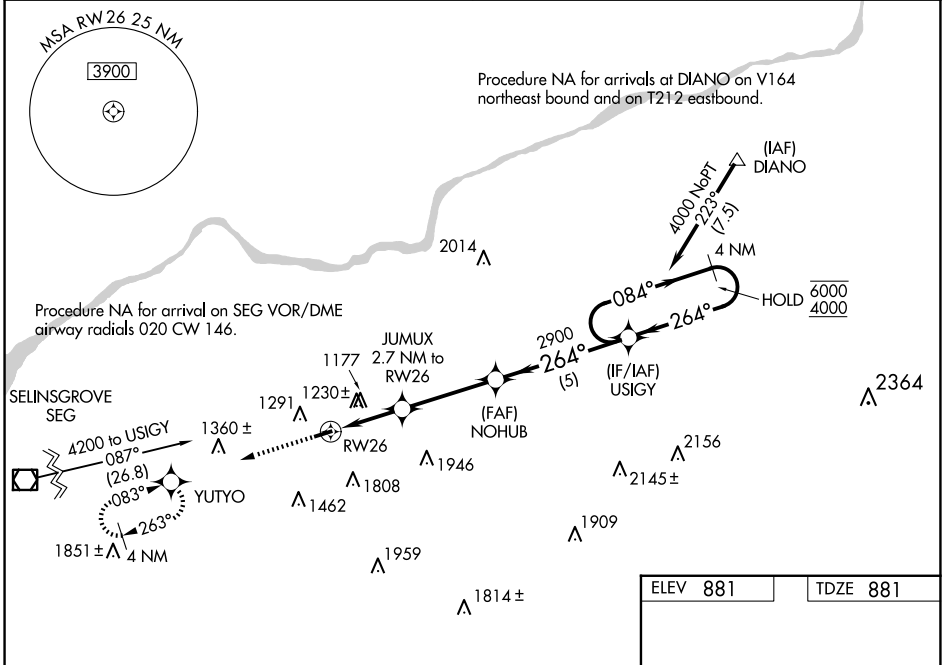


WAAS CH <b>50424</b> <b>W26A</b>	APP CRS <b>264°</b>	Rwy Ldg TDZE Apt Elev	<b>3297</b> <b>881</b> <b>881</b>
--	------------------------	-----------------------------	---

# RNAV (GPS) RWY 26

NORTHUMBERLAND COUNTY (N79)

RNP APCH - GPS.		MISSED APPROACH: Climb to 3400 direct YUTYO and hold, continue climb-in-hold to 3400.	
<p>Baro-VNAV and VDP NA when using Selinsgrove altimeter setting. Rwy 26 helicopter visibility reduction below 3/4 SM NA. For uncompensated Baro-VNAV systems, LNAV/VNAV NA below -16°C or above 54°C. When local altimeter setting not received, use Selinsgrove altimeter setting and increase LPV DA to 1529 feet and all visibilities 1/4 SM. Increase LNAV/VNAV DA to 1651 feet and all visibilities 5/8 SM. Increase all MDAs 100 feet and LNAV visibility Cat C 1/4 SM.</p>			
AWOS-3 <b>119.175</b>	HARRISBURG APP CON <b>118.25 269.45</b>	UNICOM <b>122.8 (CTAF)</b>	<b>121.8</b>



CATEGORY	A	B	C	D
LPV DA	1437-15/8	556 (600-15/8)		NA
LNAV/VNAV DA	1559-17/8	678 (700-17/8)		NA
LNAV MDA	1480-1	599 (600-1)	1480-1 5/4 599 (600-1 3/4)	NA
CIRCLING	1820-1 1/4 939 (1000-1 1/4)	1880-1 1/2 999 (1000-1 1/2)	2120-3 1239 (1300-3)	NA

ELEV 881	TDZE 881
----------	----------

MIRL Rwy 8-26   
REIL Rws 8 and 26

NE-4, 11 JUN 2026 to 09 JUL 2026

NE-4, 11 JUN 2026 to 09 JUL 2026