

| | | | |
|--|------------------------|---|-------------|
| WAAS CH 86233 W26A | APP CRS 264° | Rwy Idg TDZE 176 Apt Elev 176 | 5004 |
|--|------------------------|---|-------------|

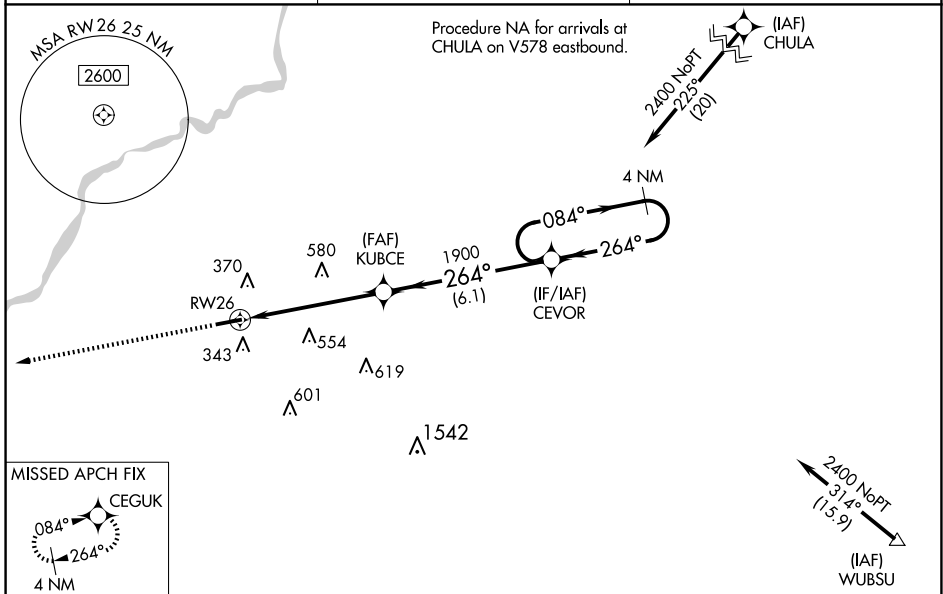
RNAV (GPS) RWY 26

CAMILLA-MITCHELL COUNTY (CXU)

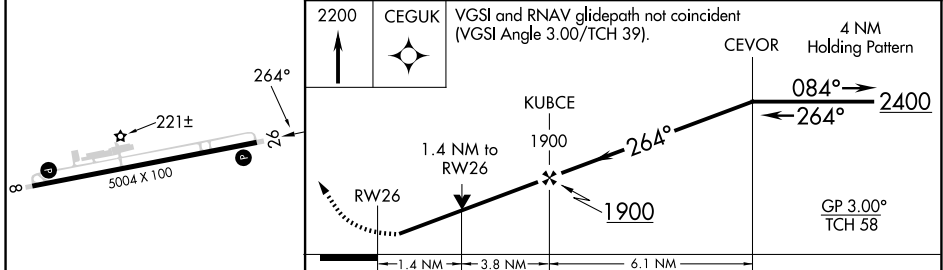
NA Baro-VNAV NA when using Albany altimeter setting. For uncompensated Baro-VNAV systems, LNAV/VNAV NA below -15°C (5°F) or above 54°C (130°F). DME/DME RNP-0.3 NA. When local altimeter setting not received, use Albany altimeter setting and increase LPV DA to 553 feet; increase LNAV/VNAV DA to 601 feet; increase all MDAs 60 feet and LNAV Cats C/D and Circling Cat D visibility ¼ SM. Rwy 26 helicopter visibility reduction below ¾ SM NA.

MISSED APPROACH:
Climb to 2200 direct CEGUK and hold.

| | | |
|----------------------------------|---|--|
| AWOS-3T 118.675 | JACKSONVILLE CENTER 125.75 363.075 | UNICOM 122.8 (CTAF) 1 |
|----------------------------------|---|--|



| | |
|----------|----------|
| ELEV 176 | TDZE 176 |
|----------|----------|



| CATEGORY | A | B | C | D |
|--------------|----------------------|----------------------|------------------------|------------------------|
| LPV DA | | 505-1 | 329 (400-1) | |
| LNAV/VNAV DA | | 553-1¼ | 377 (400-1¼) | |
| LNAV MDA | 660-1 | 484 (500-1) | 660-1¾ 484 (500-1¾) | |
| CIRCLING | 720-1 544 (600-1) | 760-1 584 (600-1) | 920-2¼ 744 (800-2¼) | 940-2½ 764 (800-2½) |

REIL Rwy 8 and 26 1
MIRL Rwy 8-26 1

SE-4, 11 JUN 2026 to 09 JUL 2026

SE-4, 11 JUN 2026 to 09 JUL 2026