

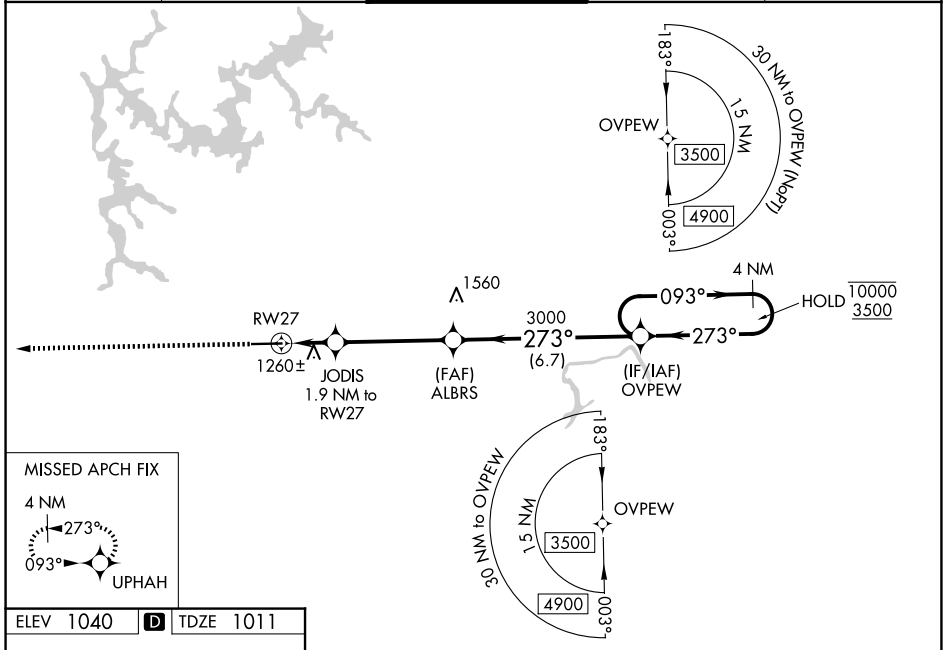
WAAS CH <b>97308</b> <b>W27A</b>	APP CRS <b>273°</b>	Rwy Ldg TDZE <b>1011</b> Apt Elev <b>1040</b>	<b>5374</b>
--	------------------------	---	-------------

# RNAV (GPS) RWY 27

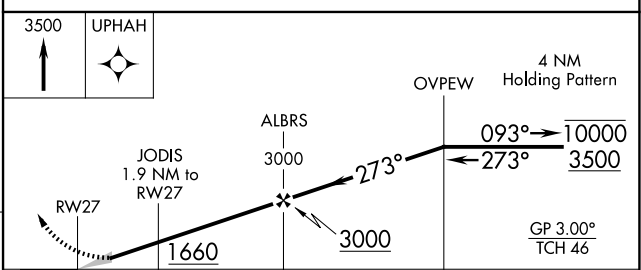
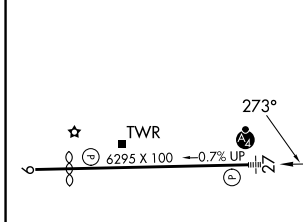
COBB COUNTY INTL/MCCOLLUM FLD (RYY)

RNP APCH-GPS.		MALSF	MISSED APPROACH: Climb to 3500 direct UPHAH and hold.
<p>⚠ Inop table does not apply to LPV. For uncompensated Baro-VNAV systems, LNAV/VNAV NA below -17°C or above 54°C. For inop ALS, increase LNAV/VNAV all Cats and LNAV Cats C and D visibility to 1½ SM.</p>			

ATIS <b>128.125</b>	ATLANTA APP CON <b>121.0 268.7</b>	MCCOLLUM TOWER ★ <b>125.9 (CTAF) 0</b>	GND CON <b>119.0</b>	UNICOM <b>122.7</b>
------------------------	---------------------------------------	---	-------------------------	------------------------



ELEV <b>1040</b>	<b>D</b>	TDZE <b>1011</b>
------------------	----------	------------------



CATEGORY	A	B	C	D
LPV DA	1211-¾		200 (200-¾)	
LNAV/VNAV DA	1520-1¼		509 (500-1¼)	
LNAV MDA	1520-¾	509 (500-¾)	1520-1¼	509 (500-1¼)
CIRCLING	1800-1	760 (800-1)	2180-3	1140 (1200-3)

SE-4, 11 JUN 2026 to 09 JUL 2026

SE-4, 11 JUN 2026 to 09 JUL 2026

HIRL Rwy 9-27 0