

VORTAC RMG 115.4 Chan 101	APP CRS 108°	Rwy Ldg TDZE Apt Elev 5233 1028 1040
--	------------------------	--

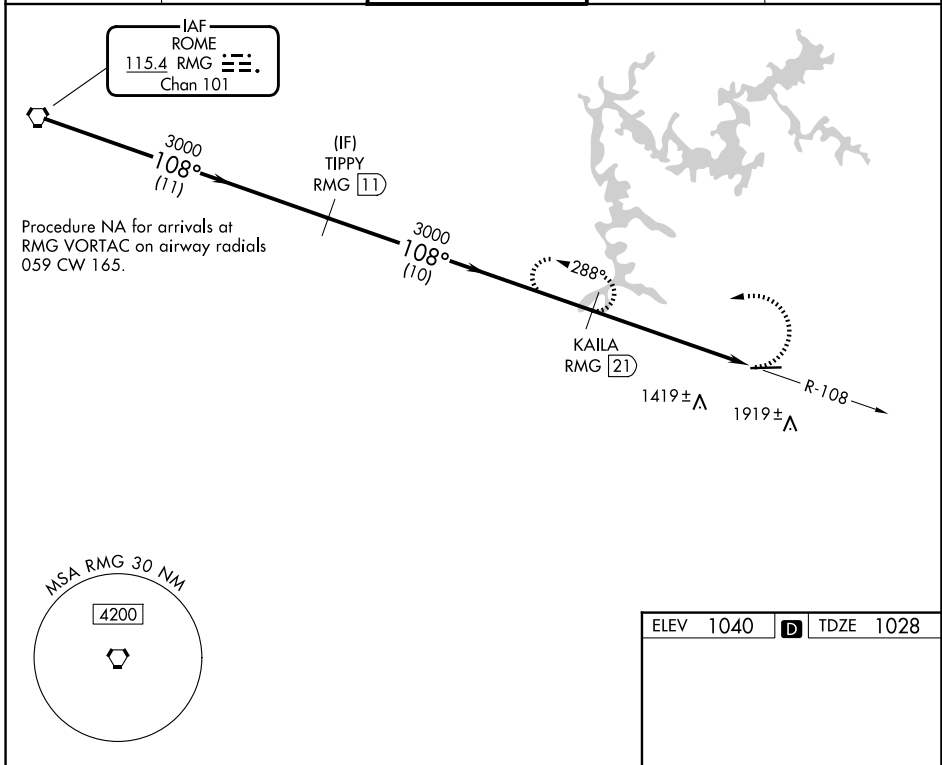
VOR/DME RWY 9

COBB COUNTY INTL/MCCOLLUM FLD (RYY)

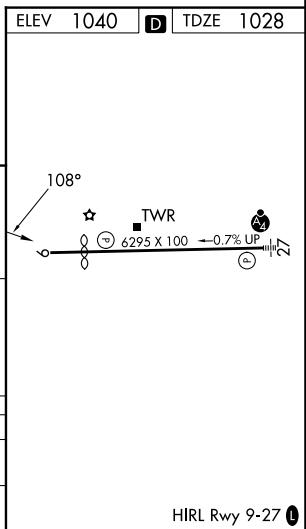
⚠ Rwy 9 helicopter visibility reduction below 1 SM NA. When local altimeter setting not received, use ATL altimeter setting and increase all MDAs 60 feet and S-9 Cat A/C/D visibilities ¼ mile.

MISSED APPROACH: Climbing left turn to 3000 via heading 240° and RMG R-108 to KAILA/21 DME and hold.

ATIS 128.125	ATLANTA APP CON 121.0 268.7	MCCOLLUM TOWER ★ 125.9 (CTAF) 0	GND CON 119.0	UNICOM 122.7
------------------------	---------------------------------------	---	-------------------------	------------------------



	RMG VORTAC	TIPPY RMG (11)	KAILA RMG (21)	3000	KAILA RMG (21)
Procedure Turn NA	3000	3000	3000	3000	3000
VGSI and descent angles not coincident (VGSI Angle 4.00/TCH 46).			2.93° TCH 40		
	11 NM	10 NM	6.2 NM		
CATEGORY	A	B	C	D	
S-9	1900-1 872 (900-1)	1900-1¼ 872 (900-1¼)	1900-2½ 872 (900-2½)	1900-2¾ 872 (900-2¾)	
CIRCLING	1900-1¼	860 (900-1¼)	2220-3	1180 (1200-3)	



SE-4, 11 JUN 2026 to 09 JUL 2026

SE-4, 11 JUN 2026 to 09 JUL 2026