

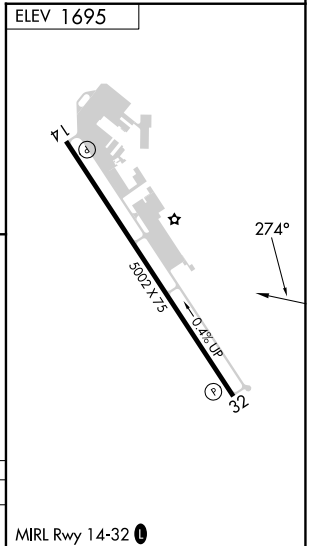
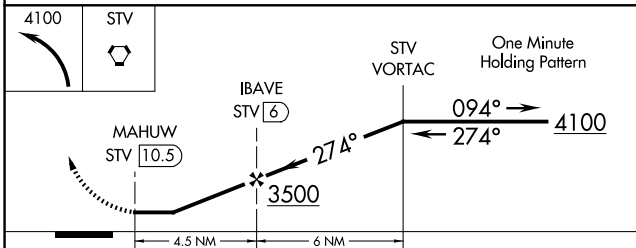
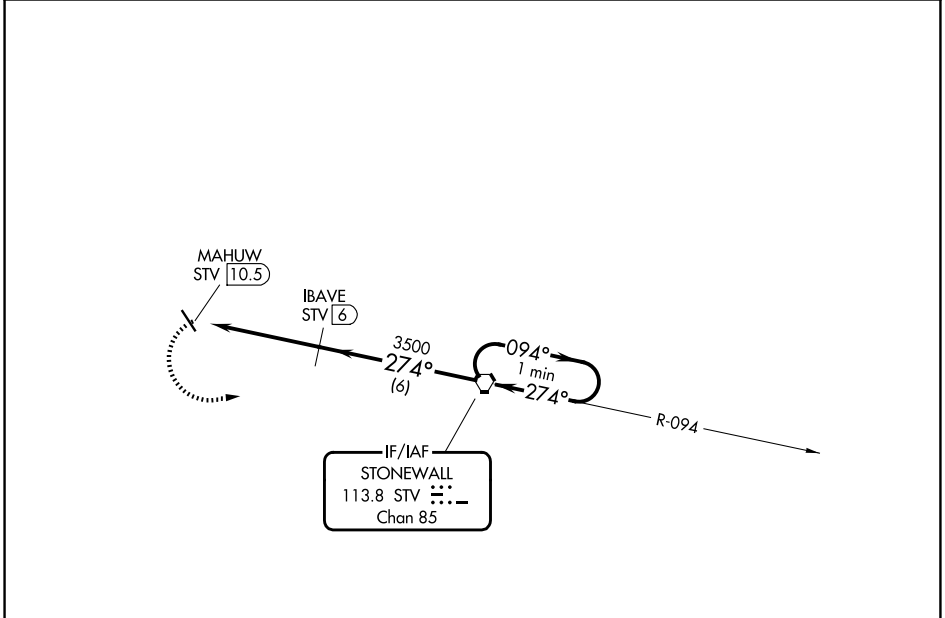
VORTAC STV 113.8 Chan 85	APP CRS 274°	Rwy Ldg TDZE N/A Apt Elev 1695
--	------------------------	--

VOR/DME-A
GILLESPIE COUNTY (T82)

⚠ When local altimeter setting not received, use Kerrville altimeter setting and increase MDA 60 feet and Cat C visibility ¼ mile.

⚠ MISSED APPROACH: Climbing left turn to 4100 direct STV VORTAC and hold.

AWOS-3 120.0	HOUSTON CENTER 134.2 307.3	UNICOM 122.7 (CTAF) 0
------------------------	--------------------------------------	---------------------------------



CATEGORY	A	B	C	D
CIRCLING	2440-1 745 (800-1)	2440-1¼ 745 (800-1¼)	2520-2½ 825 (900-2½)	NA

SC-3, 11 JUN 2026 to 09 JUL 2026

SC-3, 11 JUN 2026 to 09 JUL 2026