

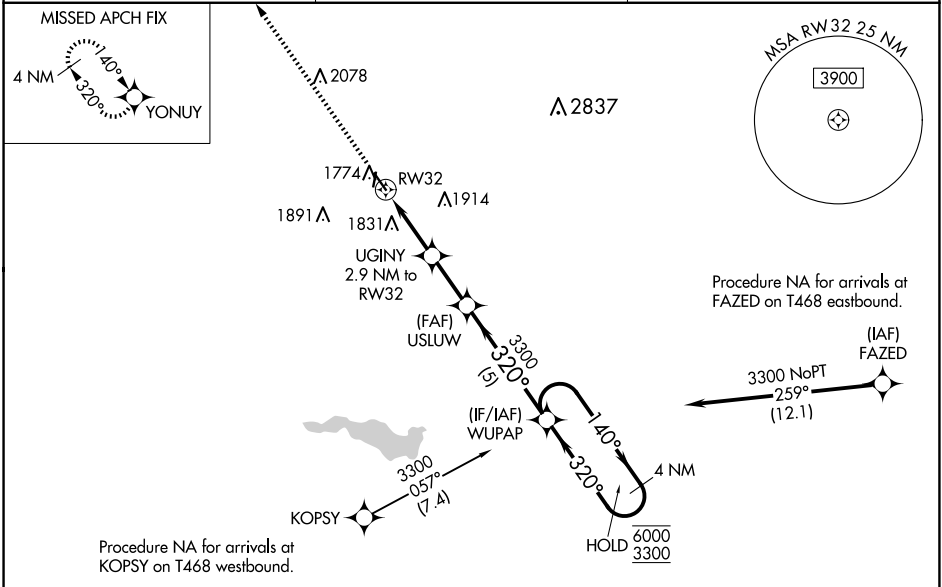
WAAS CH <b>99428</b> <b>W32A</b>	APP CRS <b>320°</b>	Rwy Idg TDZE <b>1680</b> Apt Elev <b>1692</b>	<b>4301</b>
--	------------------------	---	-------------

# RNAV (GPS) RWY 32

SUPERIOR MUNI (12K)

RNP APCH - GPS.	<p>MISSED APPROACH: Climb to 3500 direct YONUY and hold.</p>
<p>Baro-VNAV NA. Circling NA to Rwy 18 and 36. Rwy 32 helicopter visibility reduction below 3/4 SM NA. Use HJH altimeter setting; when not received use HSI altimeter setting and increase LPV DA to 2060 feet; increase LNAV/VNAV DA to 2100 feet and increase LNAV/VNAV visibility all Cats 1/8 SM; increase all MDA 60 feet and LNAV visibility Cat C to 1/8 SM, and Circling visibility Cat C 1/4 SM.</p>	

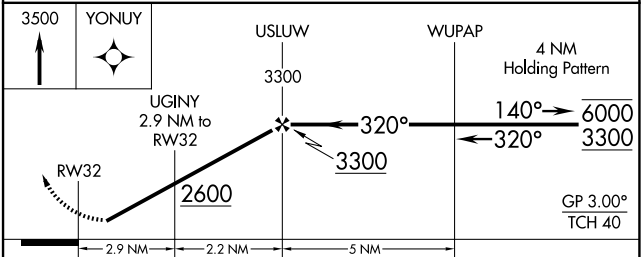
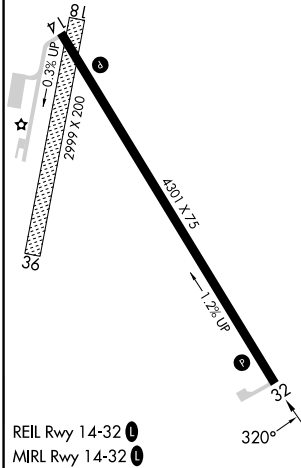
HJH AWOS-3 <b>118,525</b>	MINNEAPOLIS CENTER <b>119.4 278.8</b>	UNICOM <b>123.0 (CTAF) 0</b>
------------------------------	--	---------------------------------



NC-2, 11 JUN 2026 to 09 JUL 2026

NC-2, 11 JUN 2026 to 09 JUL 2026

ELEV 1692	TDZE 1680
-----------	-----------



CATEGORY	A	B	C	D
LPV DA	2014-1 334 (400-1)			NA
LNAV/VNAV DA	2054-1 374 (400-1)			NA
LNAV MDA	2160-1 480 (500-1)	2160-1 3/8 480 (500-1 3/8)		NA
CIRCLING	2360-1 668 (700-1)	2360-1 3/4 668 (700-1 3/4)		NA