

APP CRS	Rwy Idg	N/A
287°	TDZE	N/A
	Apt Elev	304

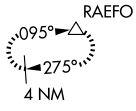
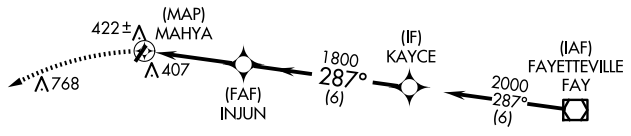
RNAV (GPS)-A

P K AIRPARK (5W4)

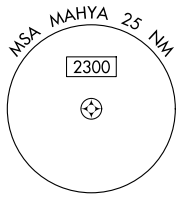
<p>NA</p>	<p>DME/DME RNP-0.3 NA. Procedure NA at night. Use Fayetteville altimeter setting.</p>	<p>MISSED APPROACH: Climbing left turn to 3000 direct RAEFO and hold.</p>
<p>FAYETTEVILLE APP CON 127.8 290.25</p>		<p>UNICOM 123.0 (CTAF)</p>

SE-2, 11 JUN 2026 to 09 JUL 2026

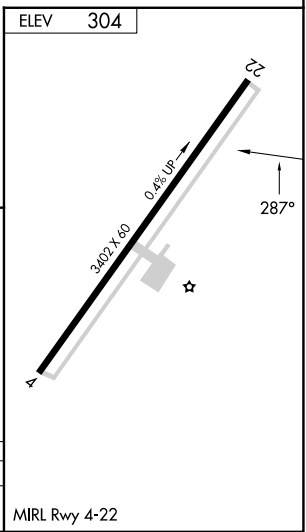
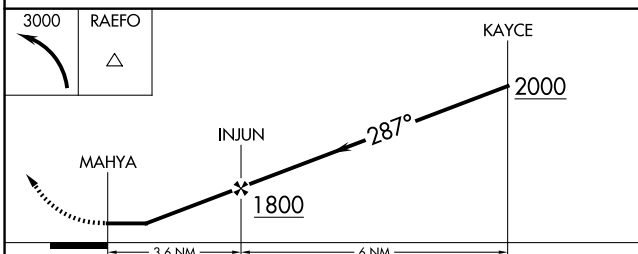
SE-2, 11 JUN 2026 to 09 JUL 2026



Procedure NA for arrival on FAY VOR/DME airway radials 225 CW 009.



1249 A



CATEGORY	A	B	C	D
CIRCLING	840-1 536 (600-1)	860-1 556 (600-1)	920-1 3/4 616 (700-1 3/4)	NA

MIRL Rwy 4-22