

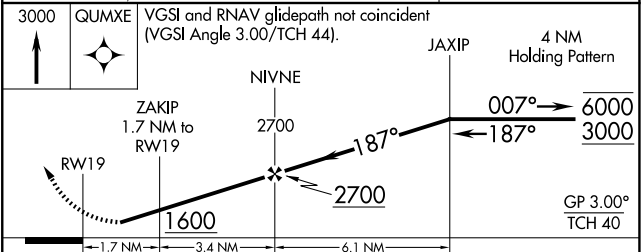
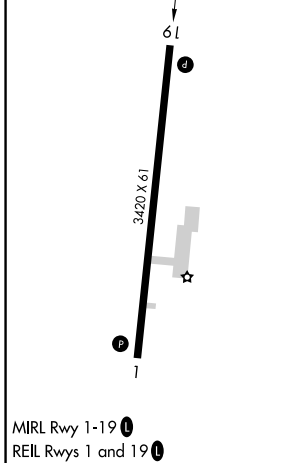
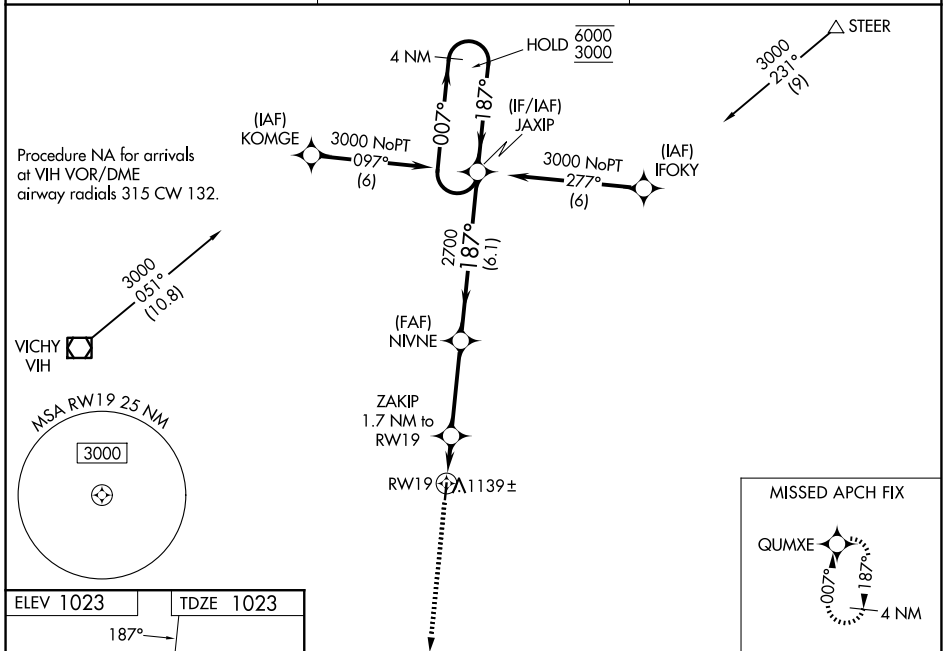
WAAS CH <b>40220</b> <b>W19A</b>	APP CRS <b>187°</b>	Rwy Ldg TDZE Apt Elev	<b>3420</b> <b>1023</b> <b>1023</b>
--	------------------------	-----------------------------	---

# RNAV (GPS) RWY 19

CUBA MUNI (UBX)

RNP APCH - GPS.	<p><b>⚠ NA</b> Circling to Rwy 1 NA at night. Circling NA for Cat B east of Rwy 19-1. Rwy 19 helicopter visibility reduction below 3/4 SM NA. Baro-VNAV NA. Use Rolla/Vichy altimeter setting; when not received, use Fort Leonard Wood altimeter setting and increase all DA 54 feet and all MDA 60 feet; increase LPV Cat A/B and LNAV/VNAV Cat A/B visibilities 1/4 SM.</p>	<p>MISSED APPROACH: Climb to 3000 direct QUMXE and hold.</p>

VIH ASOS <b>119.025</b>	KANSAS CITY CENTER <b>128.35 284.675</b>	UNICOM <b>122.8 (CTAF) 0</b>
----------------------------	---	---------------------------------



CATEGORY	A	B	C	D
LPV DA	1329-1	306 (400-1)		NA
LNAV/VNAV DA	1357-1 1/8	334 (400-1 1/8)		NA
LNAV MDA	1460-1	437 (500-1)		NA
CIRCLING	1560-1	537 (600-1)		NA

NC-3, 11 JUN 2026 to 09 JUL 2026

NC-3, 11 JUN 2026 to 09 JUL 2026