

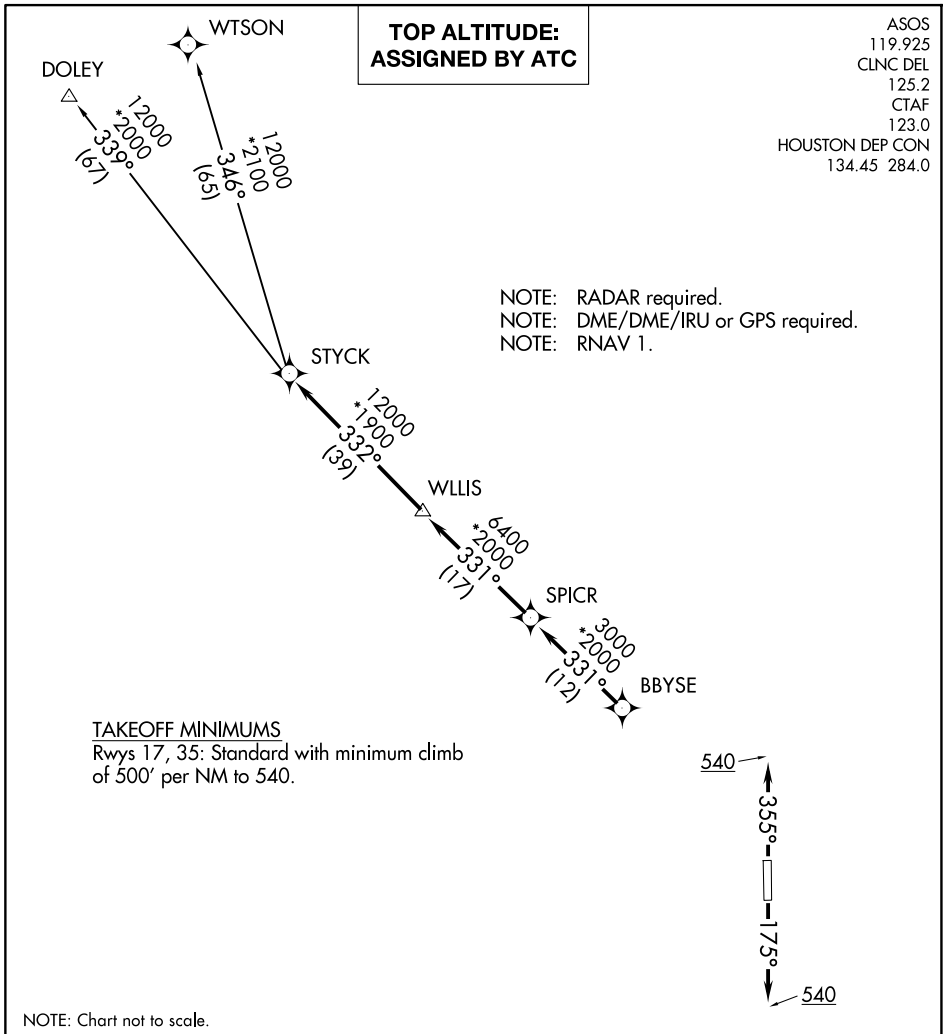
(STYCK8.STYCK) 21280

AL-6453 (FAA)

TEXAS GULF COAST RGNL (L.BX)

STYCK EIGHT DEPARTURE (RNAV)

ANGLETON/LAKE JACKSON, TEXAS



SC-5, 11 JUN 2026 to 09 JUL 2026

SC-5, 11 JUN 2026 to 09 JUL 2026



DEPARTURE ROUTE DESCRIPTION

TAKEOFF RUNWAY 17: Climb on heading 175° to 540 for RADAR vectors to BBYSE, thence. . .

TAKEOFF RUNWAY 35: Climb on heading 355° to 540 for RADAR vectors to BBYSE, thence. . .

. . . on track 331° to SPICR, then on track 331° to WLLIS, then on track 332° to STYCK, then on (transition). Maintain ATC assigned altitude. Expect filed altitude 10 minutes after departure.

DOLEY TRANSITION (STYCK8.DOLEY)

WTSON TRANSITION (STYCK8.WTSON)

STYCK EIGHT DEPARTURE (RNAV)

(STYCK8.STYCK) 07OCT21

ANGLETON/LAKE JACKSON, TEXAS

TEXAS GULF COAST RGNL (L.BX)