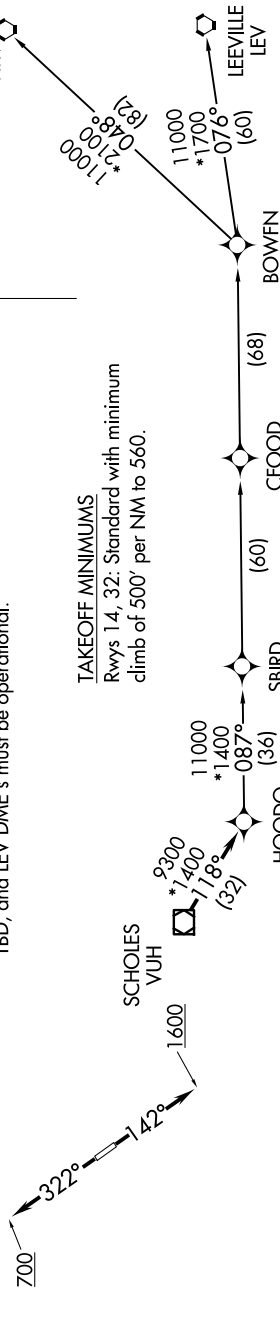


# HOODO SEVEN DEPARTURE (RNAV)

9200 TUF 60 of 9200 UN 11 '9-C-

ASOS  
118.525  
CLNC DEL  
124.0  
CTAF  
122.725  
HOUSTON DEP CON  
134.45 284.0

- NOTE: RNAV 1.
- NOTE: RADAR required.
- NOTE: ATC assigned only.
- NOTE: DME/DME/IRU or GPS required.
- NOTE: For non-GPS equipped aircraft, LCH, ILA, TBD, and LEV DME's must be operational.



**TAKEOFF MINIMUMS**  
 Rwy's 14, 32: Standard with minimum climb of 500' per NM to 560.

NOTE: Chart not to scale.

**TOP ALTITUDE:  
ASSIGNED BY ATC**

## DEPARTURE ROUTE DESCRIPTION

TAKEOFF RUNWAY 14: Climb on heading 142° to 1600, for RADAR vectors to VUH VOR/DME, thence . . . .  
TAKEOFF RUNWAY 32: Climb on heading 322° to 700, for RADAR vectors to VUH VOR/DME, thence . . . .

. . . . on track 118° to HOODO, then on (transition). Maintain ATC assigned altitude.  
 Expect filed altitude 10 minutes after departure.

- BOWFN TRANSITION (HOODO7.BOWFN)
- CFOOD TRANSITION (HOODO7.CFOOD)
- HARVEY TRANSITION (HOODO7.HRV)
- LEEVILLE TRANSITION (HOODO7.LEV)
- SBIRD TRANSITION (HOODO7.SBIRD)