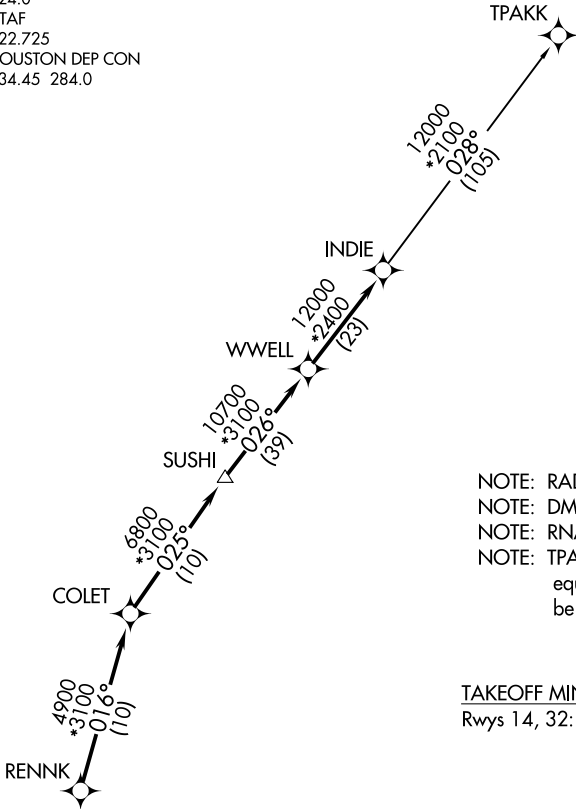


# INDIE EIGHT DEPARTURE (RNAV)

ASOS  
118.525  
CLNC DEL  
124.0  
CTAF  
122.725  
HOUSTON DEP CON  
134.45 284.0

**TOP ALTITUDE:  
ASSIGNED BY ATC**



- NOTE: RADAR required.
- NOTE: DME/DME/IRU or GPS required.
- NOTE: RNAV 1.
- NOTE: TPAKK TRANSITION: For non GPS equipped aircraft TNV DME must be operational.

### TAKEOFF MINIMUMS

Rwys 14, 32: Standard with minimum climb of 500' per NM to 560.



### DEPARTURE ROUTE DESCRIPTION

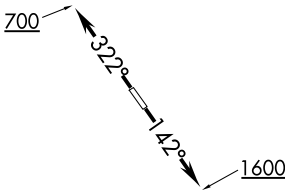
TAKEOFF RUNWAY 14: Climb on heading 142° to 1600 for RADAR vectors to RENNK, thence . . . .

TAKEOFF RUNWAY 32: Climb on heading 322° to 700 for RADAR vectors to RENNK, thence . . . .

. . . . on track 016° to COLET, then on track 025° to SUSHI, then on track 026° to WWELL, then on track 026° to INDIE, then on (transition).

Maintain ATC assigned altitude. Expect filed altitude 10 minutes after departure.

TPAKK TRANSITION (INDIE8.TPAKK)



NOTE: Chart not to scale.

SC-5, 11 JUN 2026 to 09 JUL 2026

SC-5, 11 JUN 2026 to 09 JUL 2026