

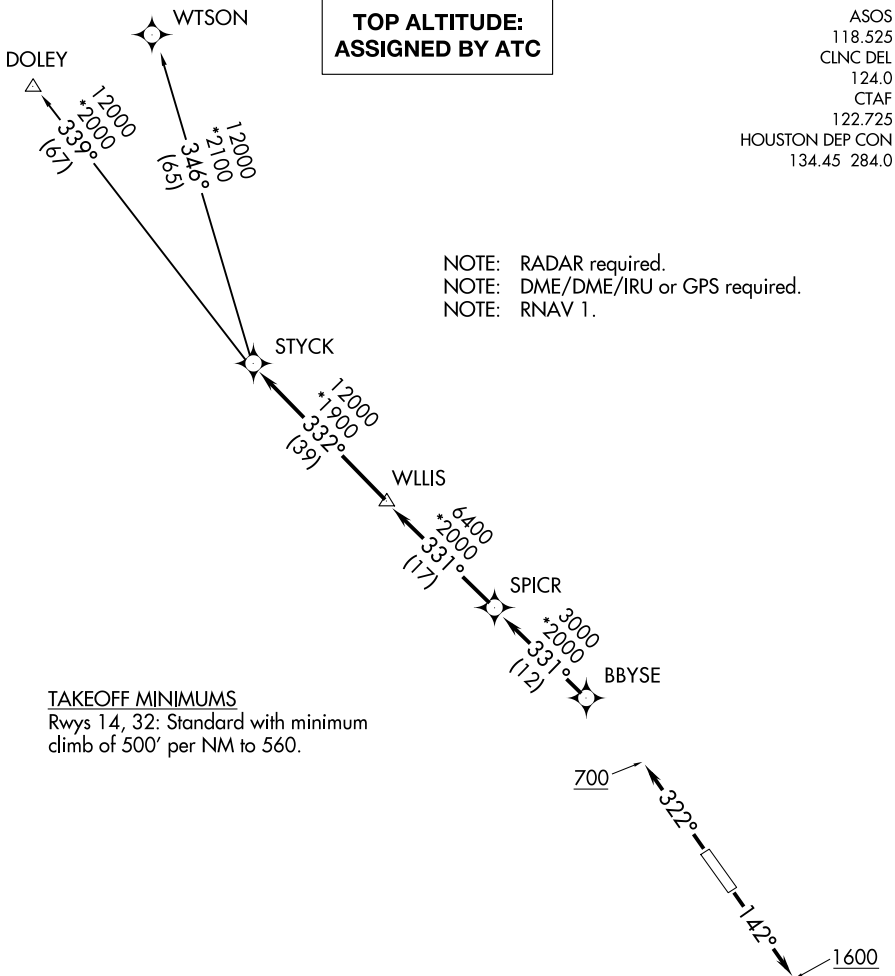
(STYCK8.STYCK) 21280

AL-6460 (FAA)

PEARLAND RGNL (L.VJ)

# STYCK EIGHT DEPARTURE (RNAV)

HOUSTON, TEXAS



NOTE: Chart not to scale.



## DEPARTURE ROUTE DESCRIPTION

**TAKEOFF RUNWAY 14:** Climb on heading 142° to 1600 for RADAR vectors to BBYSE, thence. . .

**TAKEOFF RUNWAY 32:** Climb on heading 322° to 700 for RADAR vectors to BBYSE, thence. . .

. . . on track 331° to SPICR, then on track 331° to WLLIS, then on track 332° to STYCK, then on (transition). Maintain ATC assigned altitude. Expect filed altitude 10 minutes after departure.

DOLEY TRANSITION (STYCK8.DOLEY)

WTSON TRANSITION (STYCK8.WTSON)

# STYCK EIGHT DEPARTURE (RNAV)

(STYCK8.STYCK) 07OCT21

HOUSTON, TEXAS

PEARLAND RGNL (L.VJ)

SC-5, 11 JUN 2026 to 09 JUL 2026

SC-5, 11 JUN 2026 to 09 JUL 2026