

RNAV 1 - DME/DME/IRU or GPS required.

RADAR required.

LONE STAR DEP CON  
135.975 379.9  
CTAF  
122.7

NOTE: ALIAN Transition: ATC assigned only.

TAKEOFF MINIMUMS  
Rwys 17, 35: Standard.

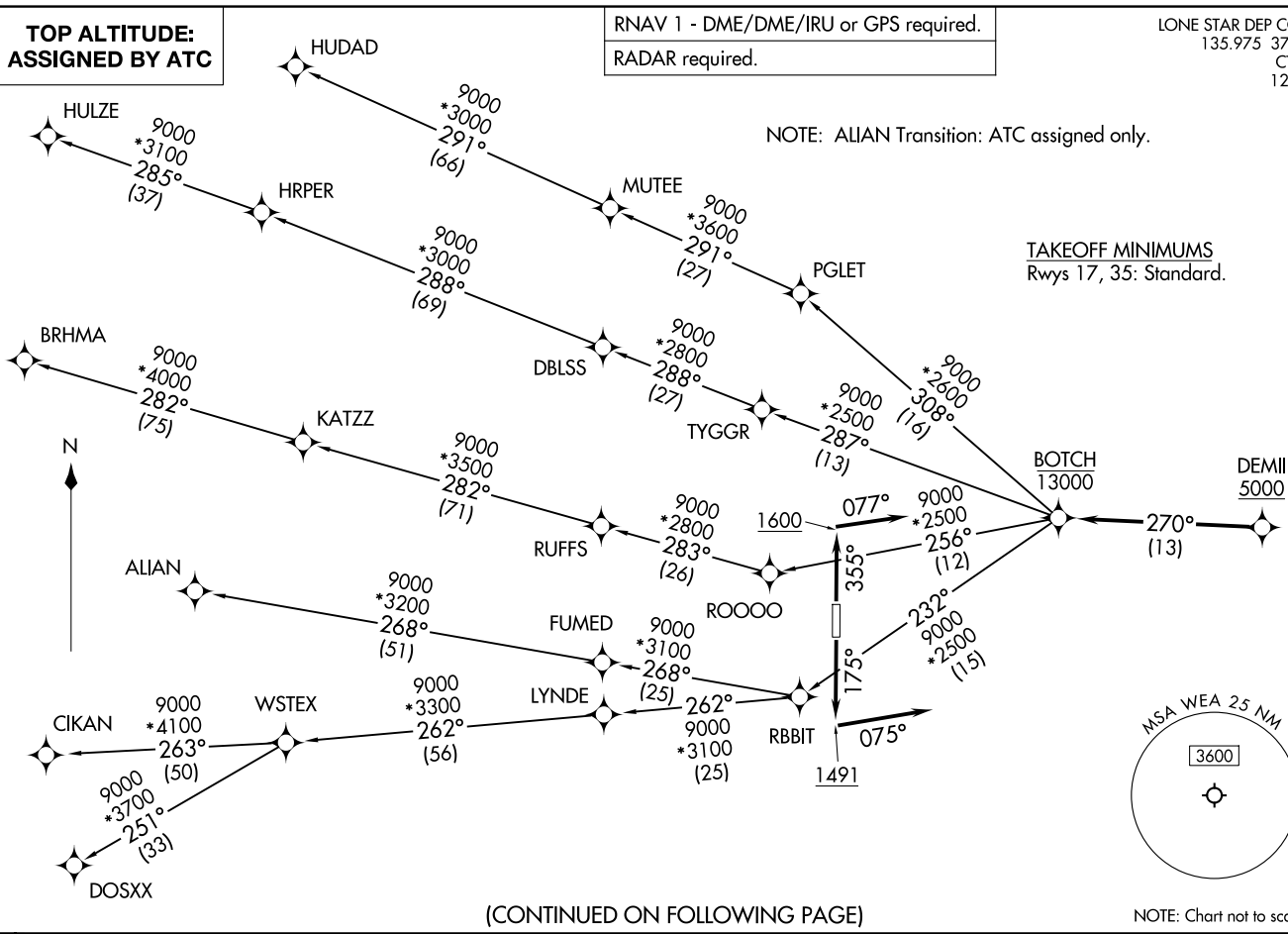
TOP ALTITUDE:  
ASSIGNED BY ATC

BOTCH TWO DEPARTURE (RNAV)  
(BOTCH2.BOTCH) 14MAY26

(BOTCH2.BOTCH) 26134  
BOTCH TWO DEPARTURE (RNAV)

AL-6497 (FAA)

PARKER COUNTY (WEA)  
WEATHERFORD, TEXAS



(CONTINUED ON FOLLOWING PAGE)

NOTE: Chart not to scale.

WEATHERFORD, TEXAS  
PARKER COUNTY (WEA)

# BOTCH TWO DEPARTURE (RNAV)



## DEPARTURE ROUTE DESCRIPTION

TAKEOFF RUNWAY 17: Climb on heading 175° to 1491, then on heading 075° or as assigned by ATC, for vectors to cross DEMII at or above 5000, thence. . .

TAKEOFF RUNWAY 35: Climb on heading 355° to 1600, then on heading 077° or as assigned by ATC, for vectors to cross DEMII at or above 5000, thence. . .

. . . on track 270° to cross BOTCH at or below 13000, then on (transition). Maintain ATC assigned altitude, expect filed altitude 10 minutes after departure.

ALIAN TRANSITION (BOTCH2.ALIAN)

BRHMA TRANSITION (BOTCH2.BRHMA)

CIKAN TRANSITION (BOTCH2.CIKAN)

DOSXX TRANSITION (BOTCH2.DOSXX)

HUDAD TRANSITION (BOTCH2.HUDAD)

HULZE TRANSITION (BOTCH2.HULZE)

WSTEX TRANSITION (BOTCH2.WSTEX)

SC-2, 11 JUN 2026 to 09 JUL 2026

SC-2, 11 JUN 2026 to 09 JUL 2026