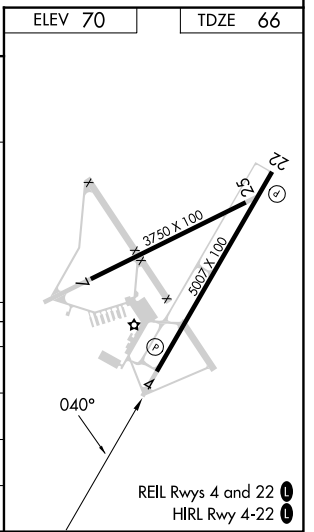
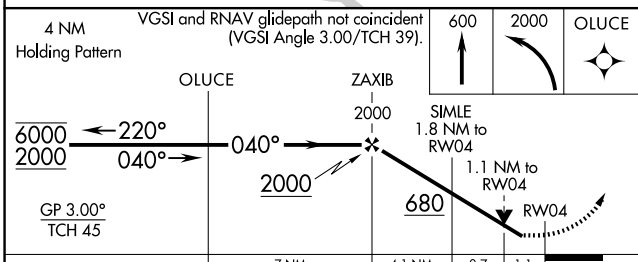
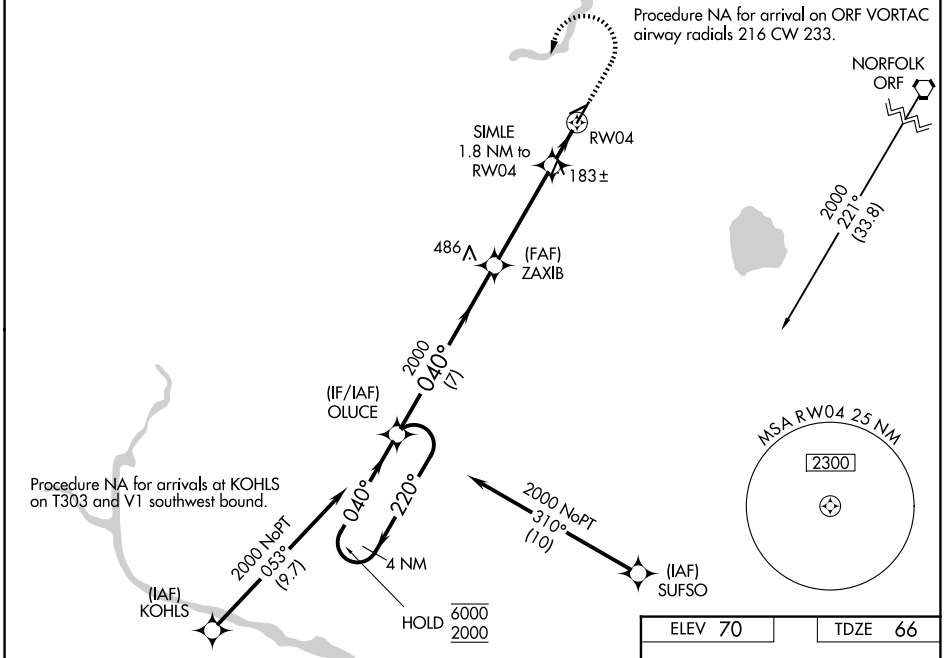


WAAS CH <b>65824</b> <b>W04A</b>	APP CRS <b>040°</b>	Rwy Ldg TDZE Apt Elev	<b>5007</b> <b>66</b> <b>70</b>
--	------------------------	-----------------------------	---------------------------------------

# RNAV (GPS) RWY 4

SUFFOLK EXEC (SF'Q)

RNP APCH - GPS.		MISSED APPROACH: Climb to 600 then climbing left turn to 2000 direct OLUCE and hold.	
AWOS-3 <b>119.375</b>	NORFOLK APP CON <b>127.9 269.425</b>	UNICOM <b>122.7 (CTAF)</b>	



CATEGORY	A	B	C	D
LPV DA		281-3/4	215 (300-3/4)	
LNAV/VNAV DA		457-1 1/8	391 (400-1 1/8)	
LNAV MDA		440-1	374 (400-1)	
CIRCLING	500-1 430 (500-1)	560-1 490 (500-1)	680-1 3/4 610 (700-1 3/4)	680-2 610 (700-2)

NE-3, 11 JUN 2026 to 09 JUL 2026

NE-3, 11 JUN 2026 to 09 JUL 2026