

WAAS CH <b>50543</b> <b>W31B</b>	APP CRS <b>295°</b>	Rwy Ldg TDZE Apt Elev	<b>5000</b> <b>957</b> <b>963</b>
--	------------------------	-----------------------------	---

# RNAV (GPS) Z RWY 31

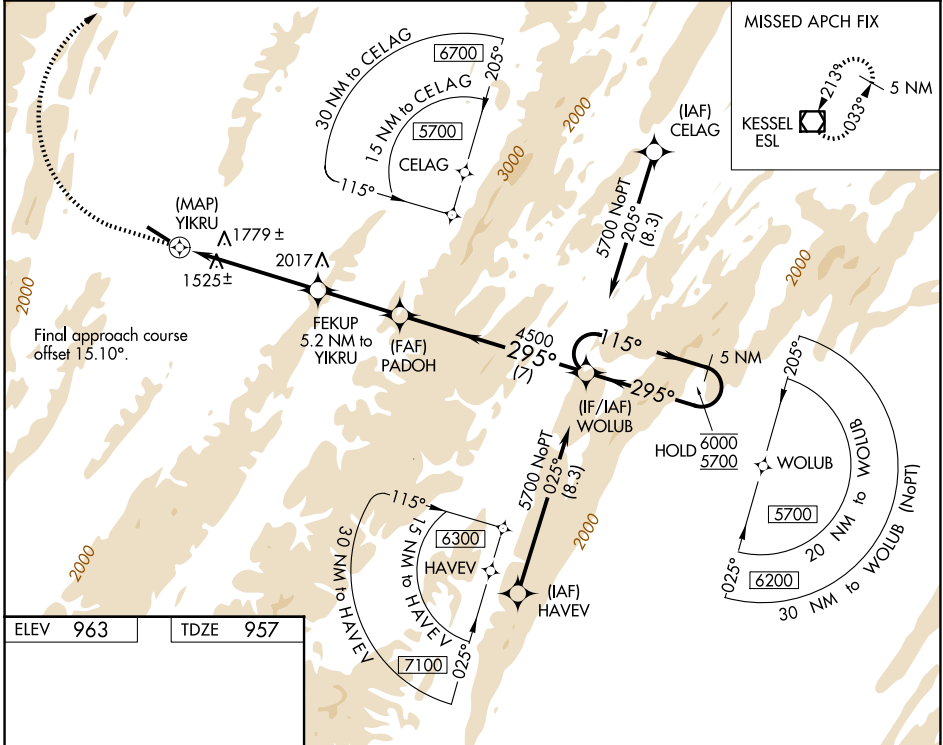
GRANT COUNTY (W99)

RNP APCH - GPS.

MISSED APPROACH: Climb to 2200 then climbing right turn to 5000 direct ESL VOR/DME and hold.  
\*Missed approach requires minimum climb of 410 feet per NM to 3300, if unable to meet climb gradient, see RNAV (GPS) Y Rwy 31.

▼ Rwy 31 helicopter visibility reduction below 3/4 SM NA.  
▲ When local altimeter setting not received, procedure NA.  
☁ -7°C

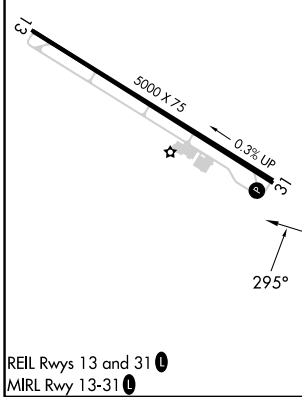
AWOS-3 <b>124.475</b>	WASHINGTON CENTER <b>133.55 322.55</b>	UNICOM <b>122.8 (CTAF) 0</b>
--------------------------	---	---------------------------------



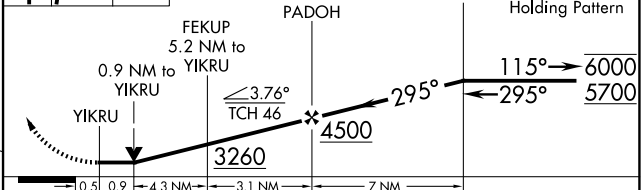
NE-4, 11 JUN 2026 to 09 JUL 2026

NE-4, 11 JUN 2026 to 09 JUL 2026

ELEV 963	TDZE 957
----------	----------



2200 5000 ESL VGSI and descent angles not coincident (VGSI Angle 6.50/TCH 46).



CATEGORY	A	B	C	D
LP MDA*	2020-1¼ 1063 (1100-1¼)	2020-1½ 1063 (1100-1½)		NA
LNAV MDA*	2120-1¼ 1163 (1200-1¼)	2120-1½ 1163 (1200-1½)		NA