

WAAS CH 65937 W21A	APP CRS 212°	Rwy Ldg TDZE Apt Elev	5500 164 164
--	------------------------	-----------------------------	---

RNAV (GPS) RWY 21

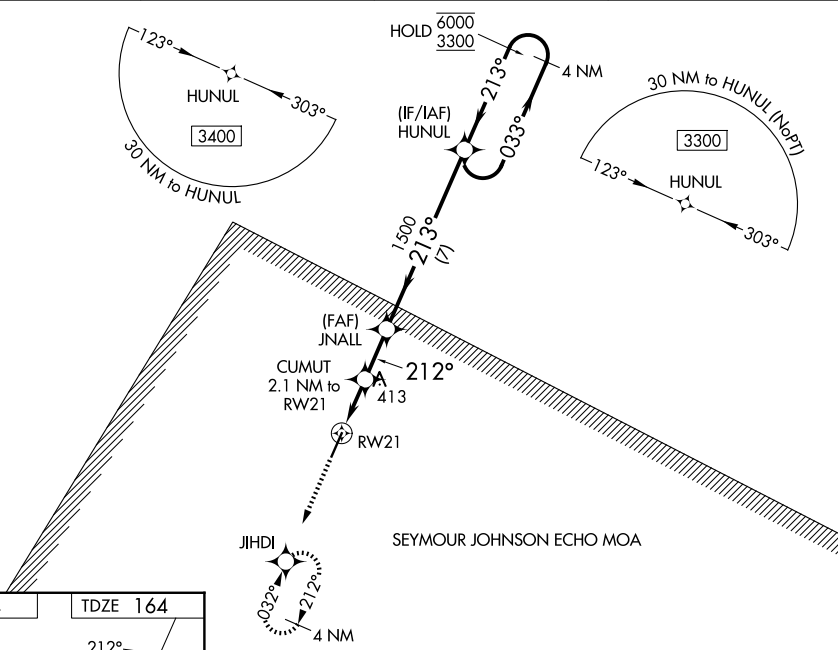
JOHNSTON RGNL (JNX)

RNP APCH - GPS.

⚠ Rwy 21 helicopter visibility reduction below $\frac{3}{4}$ SM NA. For uncompensated Baro-VNAV systems, LNAV/VNAV NA below -15°C or above 54°C. Baro-VNAV and VDP NA when using HRJ altimeter setting. When local altimeter setting not received, use HRJ altimeter setting and increase LPV DA to 574 feet and all visibilities $\frac{1}{8}$ SM; increase LNAV/VNAV DA to 716 feet and all visibilities $\frac{1}{4}$ SM; increase all MDAs 60 feet and LNAV visibility Cat C/D $\frac{1}{8}$ SM, and Circling visibility Cat C $\frac{1}{2}$ SM.

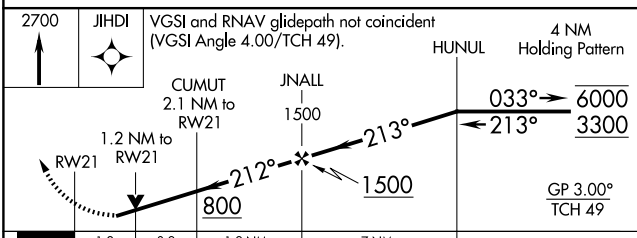
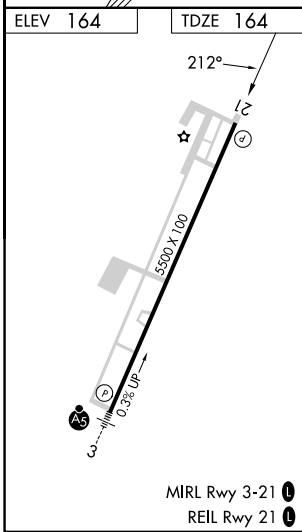
MISSED APPROACH:
Climb to 2700 direct JIHDI and hold, continue climb-in-hold to 2700.

AWOS-3 120.225	RALEIGH APP CON 125.3 353.675	GCO 135.075	UNICOM 122.725 (CTAF) ①
--------------------------	---	-----------------------	-----------------------------------



SE-2, 11 JUN 2026 to 09 JUL 2026

SE-2, 11 JUN 2026 to 09 JUL 2026



CATEGORY	A	B	C	D
LPV DA		524-1	360 (400-1)	
LNAV/VNAV DA		666-1 $\frac{3}{8}$	502 (600-1 $\frac{3}{8}$)	
LNAV MDA	720-1	556 (600-1)	720-1 $\frac{5}{8}$	556 (600-1 $\frac{5}{8}$)
CIRCLING	720-1	556 (600-1)	960-2 $\frac{1}{4}$ 796 (800-2 $\frac{1}{4}$)	1100-3 936 (1000-3)