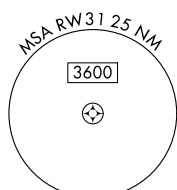
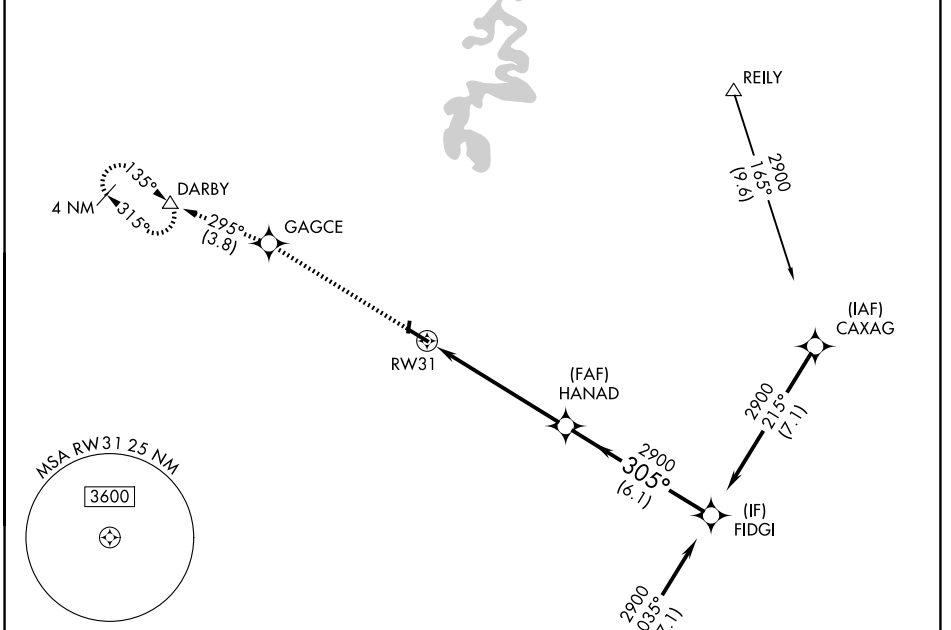


WAAS CH <b>70506</b> <b>W31A</b>	APP CRS <b>305°</b>	Rwy Ldg TDZE <b>1016</b> Apt Elev <b>1022</b>	<b>5000</b>
--	------------------------	---	-------------

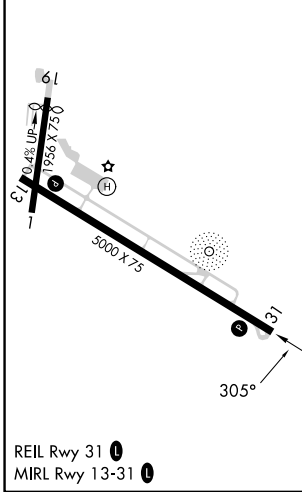
# RNAV (GPS) RWY 31

STUART POWELL FLD (DVK)

RNP APCH - GPS.		MISSED APPROACH: Climb to 3000 direct GAGCE and on track 295° to DARBY and hold.
<p><b>▼</b> For uncompensated Baro-VNAV systems, LNAV/VNAV NA below -17° C or above 54° C.</p> <p><b>▲</b></p>		
AWOS-3 <b>128.325</b>	LEXINGTON APP CON <b>120.15 259.3</b>	UNICOM <b>122.8 (CTAF) 0</b>



ELEV 1022	TDZE 1016
-----------	-----------



3000	GAGCE	Ir 295°	DARBY	HANAD	FIDGI	
↑	✧	△				
	1.5 NM to RWY 31	2900	305°	2900		GP 3.00° TCH 30
	1.5 NM	4.4 NM	6.1 NM			
CATEGORY	A	B	C	D		
LPV DA		1216-1	200 (200-1)			
LNAV/VNAV DA		1492-1 3/8	476 (500-1 1/8)			
LNAV MDA	1520-1	504 (500-1)	1520-1 3/8	504 (500-1 1/8)		
CIRCLING	1520-1 498 (500-1)	1680-1 658 (700-1)	1720-2 698 (700-2)	1840-2 3/4 818 (900-2 3/4)		

SE-1, 11 JUN 2026 to 09 JUL 2026

SE-1, 11 JUN 2026 to 09 JUL 2026