

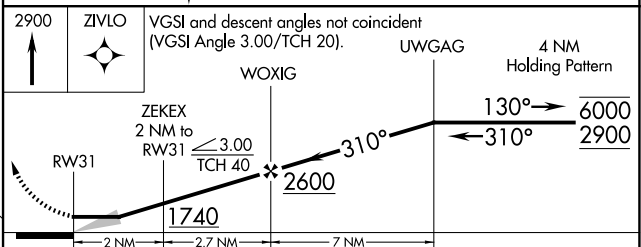
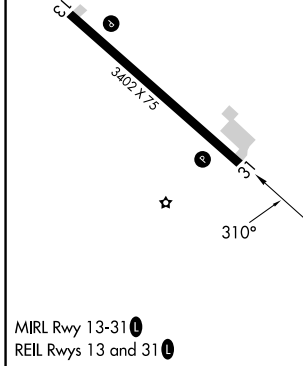
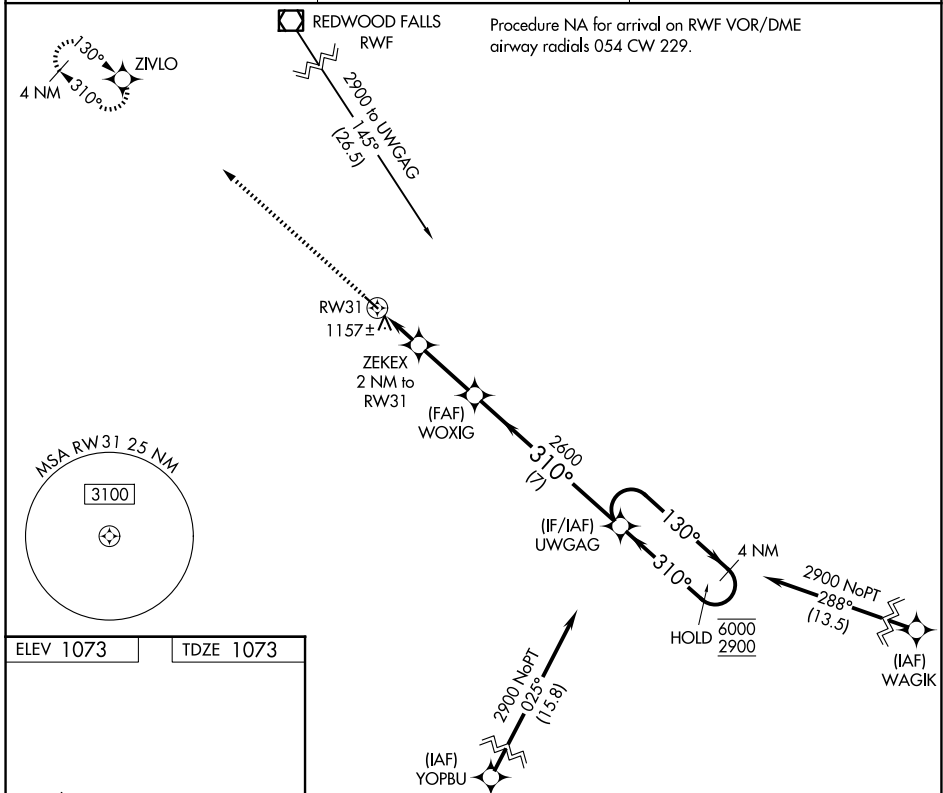
APP CRS	Rwy Ldg	<b>3402</b>
<b>310°</b>	TDZE	<b>1073</b>
	Apt Elev	<b>1073</b>

# RNAV (GPS) RWY 31

SPRINGFIELD MUNI (D42)

RNP APCH.	MISSED APPROACH: Climb to 2900 direct ZIVLO and hold.
NA Use Redwood Falls altimeter setting.	

RWF ASOS <b>126.575</b>	MINNEAPOLIS CENTER <b>127.1 290.2</b>	UNICOM <b>122.8 (CTAF) 0</b>
----------------------------	--	---------------------------------



CATEGORY	A	B	C	D
LNAV MDA	1500-1	427 (500-1)	1500-1¼ 427 (500-1¼)	NA
CIRCLING	1660-1 587 (600-1)	1820-1 747 (800-1)	1820-2¼ 747 (800-2¼)	NA

NC-1, 11 JUN 2026 to 09 JUL 2026

NC-1, 11 JUN 2026 to 09 JUL 2026