

APP CRS Rwy Idg **3400**  
 277° TDZE **1237**  
 Apt Elev **1238**

# RNAV (GPS) RWY 28

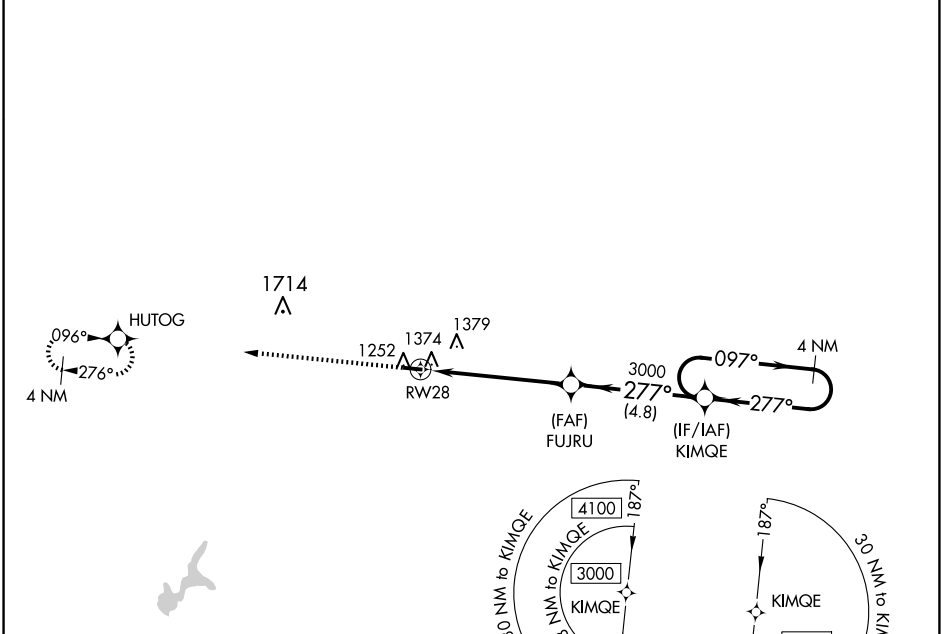
NEILLSVILLE MUNI (VIQ)

RNP APCH.

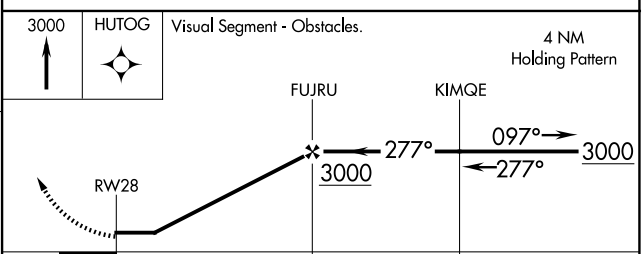
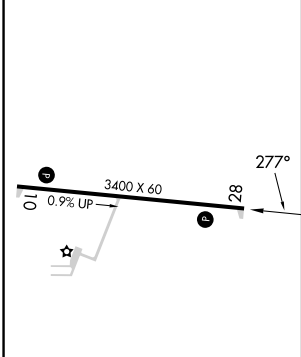
**▼** Rwy 28 helicopter visibility reduction below 3/4 SM NA. Use Marshfield altimeter setting; when not received, use Wisconsin Rapids altimeter setting and increase all MDA 80 feet.

MISSED APPROACH:  
 Climb to 3000 direct  
 HUTOG and hold.

MFI ASOS <b>121.575</b>	MINNEAPOLIS CENTER <b>124.4 317.7</b>	UNICOM <b>122.8 (CTAF)</b>
----------------------------	--	-------------------------------



ELEV 1238 TDZE 1237



CATEGORY	A	B	C	D
LNAV MDA	1680-1	443 (500-1)	NA	
CIRCLING	1720-1	482 (500-1)	NA	

LURL Rwy 10-28

EC-3, 11 JUN 2026 to 09 JUL 2026

EC-3, 11 JUN 2026 to 09 JUL 2026