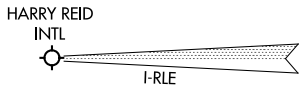
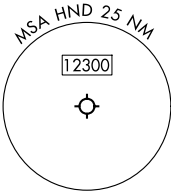


SCAMR FOUR DEPARTURE (RNAV)
(SCAMR4, SCAMR) 25JAN24

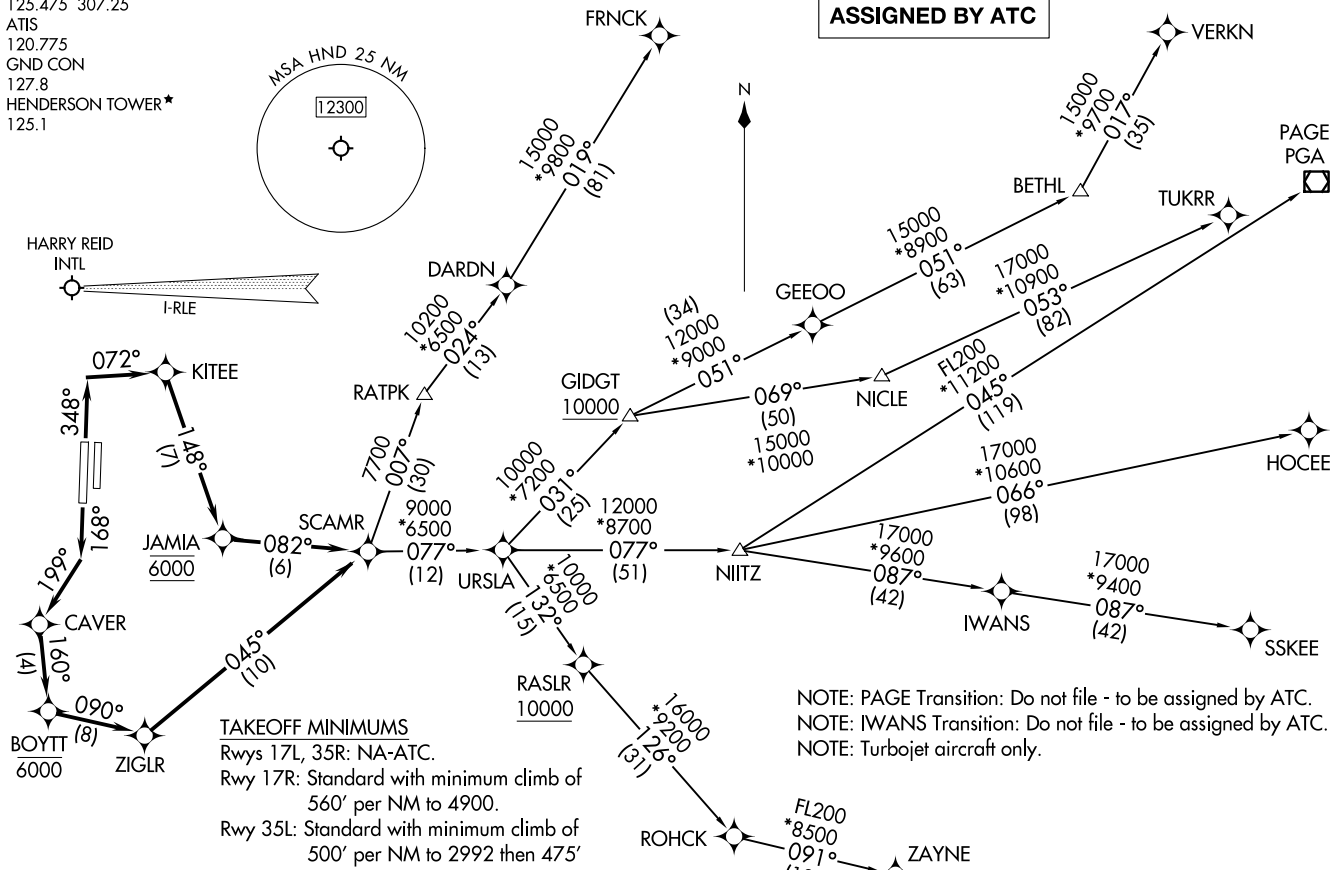
(SCAMR4, SCAMR) 25Z75
SCAMR FOUR DEPARTURE (RNAV)

LAS VEGAS DEP CON
125.475 307.25
ATIS
120.775
GND CON
127.8
HENDERSON TOWER*
125.1

RNAV 1 - GPS.



TOP ALTITUDE:
ASSIGNED BY ATC



TAKEOFF MINIMUMS
Rwys 17L, 35R: NA-ATC.
Rwy 17R: Standard with minimum climb of 560' per NM to 4900.
Rwy 35L: Standard with minimum climb of 500' per NM to 2992 then 475' per NM to 5300.

NOTE: PAGE Transition: Do not file - to be assigned by ATC.
NOTE: IWANS Transition: Do not file - to be assigned by ATC.
NOTE: Turbojet aircraft only.

NOTE: Chart not to scale.

(CONTINUED ON FOLLOWING PAGE)

LAS VEGAS, NEVADA
HENDERSON EXEC (HND)

HENDERSON EXEC (HND)
LAS VEGAS, NEVADA



DEPARTURE ROUTE DESCRIPTION

TAKEOFF RUNWAY 17R: Climb on heading 168° to intercept course 199° to CAVER, then on track 160° to cross BOYTT at or below 6000, then on track 090° to ZIGLR, then on track 045° to SCAMR, thence. . . .

TAKEOFF RUNWAY 35L: Climb on heading 348° to intercept course 072° to KITEE, then on track 148° to cross JAMIA at 6000, then on track 082° to SCAMR, thence. . . .

. . . . (transition). Maintain ATC assigned altitude, expect filed altitude 10 minutes after departure.

FRNCK TRANSITION (SCAMR4.FRNCK)

HOCEE TRANSITION (SCAMR4.HOCEE)

IWANS TRANSITION (SCAMR4.IWANS)

PAGE TRANSITION (SCAMR4.PGA)

SSKEE TRANSITION (SCAMR4.SSKEE)

TUKRR TRANSITION (SCAMR4.TUKRR)

VERKN TRANSITION (SCAMR4.VERKN)

ZAYNE TRANSITION (SCAMR4.ZAYNE)

SW-4, 11 JUN 2026 to 09 JUL 2026

SW-4, 11 JUN 2026 to 09 JUL 2026