

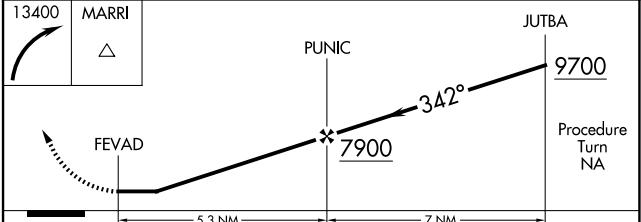
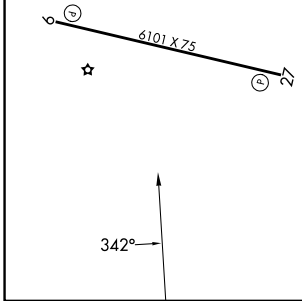
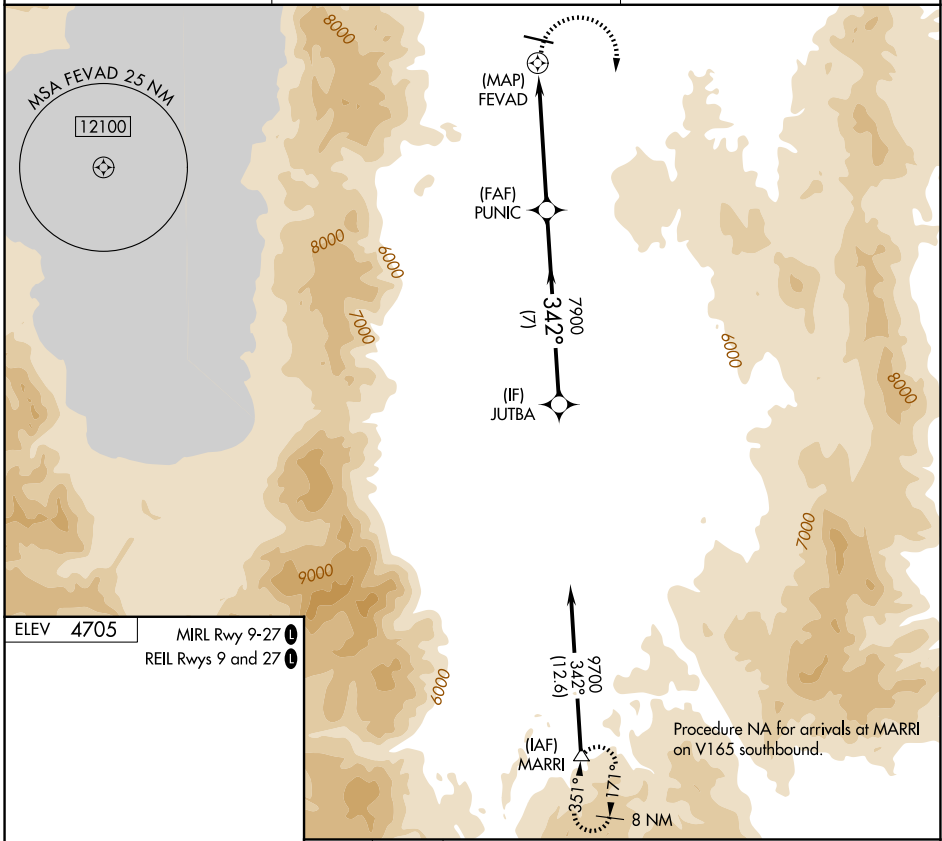
APP CRS	Rwy Ldg	N/A
342°	TDZE	N/A
	Apt Elev	4705

RNAV (GPS)-A

CARSON CITY (CXP)

RNP APCH.	Procedure NA at night. When local altimeter setting not received, use Reno/Tahoe Inlt altimeter setting and increase all MDA 540 feet. Circling NA north of Rwy 9-27.	MISSED APPROACH: Climbing right turn to 13400 direct MARRI and hold, continue climb-in-hold to 13400.
⚠ NA ❄ -18°C		

AWOS-3PT 119.925	NORCAL APP CON 119.2 279.55	UNICOM 123.0 (CTAF) 0
----------------------------	---------------------------------------	---------------------------------



CATEGORY	A	B	C	D
CIRCLING	6380-1¼ 1675 (1700-1¼)	6380-1½ 1675 (1700-1½)	6380-3 1675 (1700-3)	7660-3 2955 (3000-3)

SW-4, 11 JUN 2026 to 09 JUL 2026

SW-4, 11 JUN 2026 to 09 JUL 2026