

| | | | |
|--|------------------------|-----------------------------|---|
| WAAS CH 70606 W06A | APP CRS 055° | Rwy Idg TDZE Apt Elev | 5003 1451 1458 |
|--|------------------------|-----------------------------|---|

RNAV (GPS) RWY 6

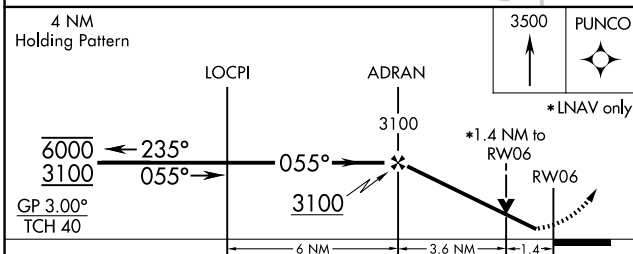
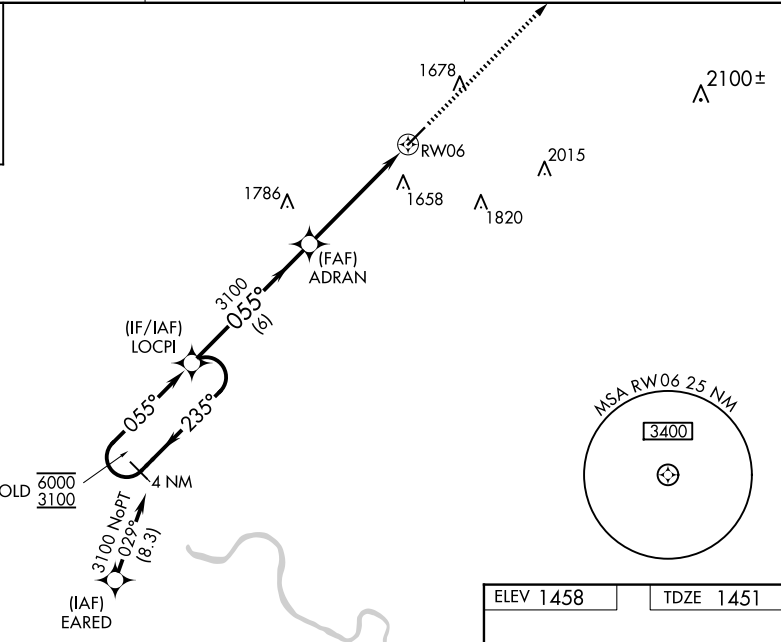
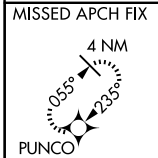
CLARION COUNTY (AXQ)

RNP APCH.

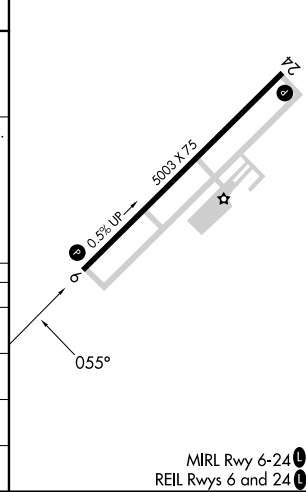
NA Baro-VNAV and VDP NA when using Dubois altimeter setting. Rwy 6 helicopter visibility reduction below $\frac{3}{4}$ NA. For uncompensated Baro-VNAV systems, LNAV/VNAV NA below -17°C or above 54°C. When local altimeter setting not received, use Dubois altimeter setting and increase LPV DA to 1809 feet, LNAV/VNAV DA to 2093 feet, and all visibilities $\frac{3}{8}$ SM; increase all MDAs 120 feet and LNAV visibility Cats C/D $\frac{3}{8}$ SM, and Circling Cat C/D visibility $\frac{1}{2}$ SM.

MISSED APPROACH: Climb to 3500 direct PUNCO and hold.

| | | |
|--------------------------|---|---------------------------------|
| AWOS-3 118.275 | CLEVELAND CENTER 126.725 291.65 | UNICOM 122.8 (CTAF) 0 |
|--------------------------|---|---------------------------------|



| | |
|-----------|-----------|
| ELEV 1458 | TDZE 1451 |
|-----------|-----------|



| CATEGORY | A | B | C | D |
|--------------|--------|-------------|-------------------------|-------------------------|
| LPV DA | | 1701-1 | 250 (300-1) | |
| LNAV/VNAV DA | | 1985-1½ | 534 (600-1½) | |
| LNAV MDA | 1920-1 | 469 (500-1) | 1920-1¾ | 469 (500-1¾) |
| CIRCLING | 1980-1 | 522 (600-1) | 2100-1¾ 642 (700-1¾) | 2180-2¼ 722 (800-2¼) |

NE-4, 11 JUN 2026 to 09 JUL 2026

NE-4, 11 JUN 2026 to 09 JUL 2026