

WAAS CH 72647 W35A	APP CRS 353°	Rwy Ldg TDZE 1547 Apt Elev 1551	4001 1547 1551
--	------------------------	---	---

RNAV (GPS) RWY 35

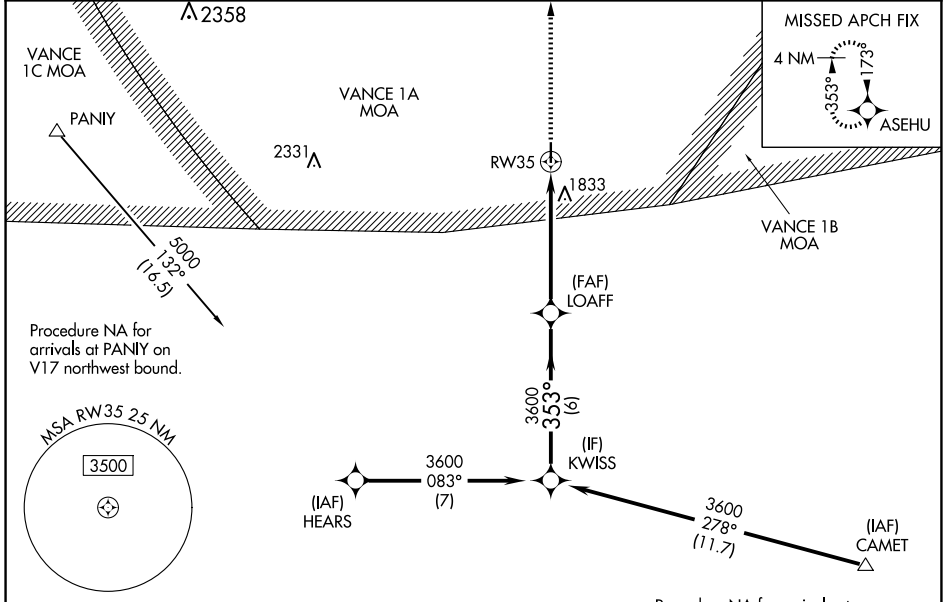
WATONGA RGNL (JWG)

RNP APCH - GPS.

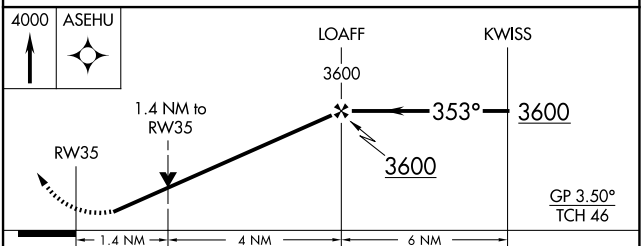
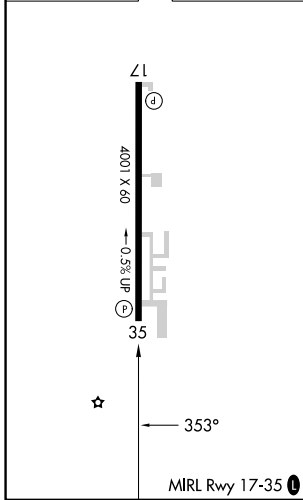
⚠ For uncompensated Baro-VNAV systems, LNAV/VNAV NA below -18°C or above 54°C. Baro-VNAV and VDP NA when using CLK altimeter setting. Rwy 35 helicopter visibility reduction below 3/4 SM NA. When local altimeter setting not received, use CLK altimeter setting and increase LPV DA to 1903 feet and all visibilities 1/2 SM. Increase LNAV/VNAV DA to 2186 feet and all visibilities 1/2 SM. Increase all MDAs 100 feet and LNAV visibility Cat C 1/4 SM, and Circling visibility Cat C 3/8 SM.

MISSED APPROACH:
Climb to 4000 direct ASEHU and hold.

AWOS-3 134.175	VANCE APP CON ★ 126.75 346.325	UNICOM 122.8 (CTAF) 0
--------------------------	--	---------------------------------



ELEV 1551	TDZE 1547
------------------	------------------



CATEGORY	A	B	C	D
LPV DA	1817-7/8	270 (300-3/4)		NA
LNAV/VNAV DA	2100-1 1/8	553 (600-1 1/8)		NA
LNAV MDA	2100-1	553 (600-1)	2100-1 1/8 (600-1 1/8)	NA
CIRCLING	2100-1 549 (600-1)	2140-1 589 (600-1)	2140-1 1/8 589 (600-1 1/8)	NA

SC-1, 11 JUN 2026 to 09 JUL 2026

SC-1, 11 JUN 2026 to 09 JUL 2026