

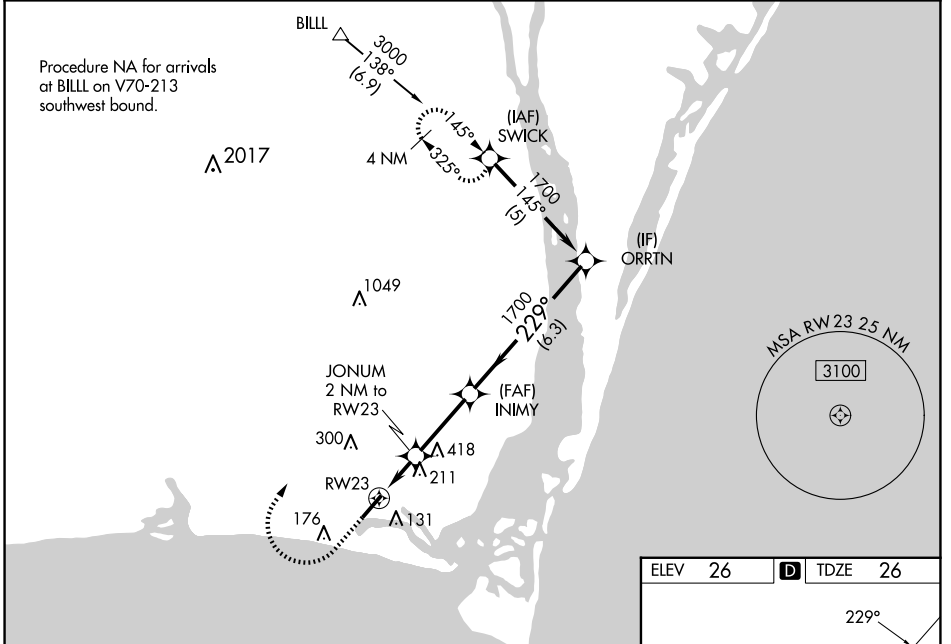
WAAS CH 90527 W23A	APP CRS 229°	Rwy Idg TDZE Apt Elev	5105 26 26
--	------------------------	-----------------------------	---------------------------------------

RNAV (GPS) RWY 23

CAPE FEAR RGNL JETPORT/HOWIE FRANKLIN FLD (SU'T)

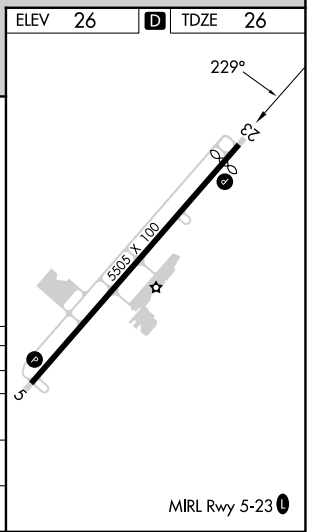
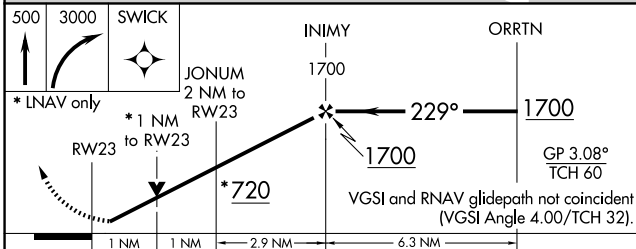
RNP APCH - GPS.	<p>⚠ Baro-VNAV NA when using Wilmington altimeter setting. For uncompensated Baro-VNAV systems, LNAV/VNAV NA below -15°C or above 54°C. When local altimeter setting not received, use Wilmington altimeter setting and increase LPV DA to 335 feet, increase LNAV/VNAV DA to 327 feet, increase all MDAs 60 feet and Circling visibility Cat C ¼ SM. Rwy 23 helicopter visibility reduction below ¾ SM NA. VDP NA when using Wilmington altimeter setting.</p>	<p>MISSED APPROACH: Climb to 500 then climbing right turn to 3000 direct SWICK and hold.</p>

AWOS-3P 124.175	WILMINGTON APP CON ★ 118.25 284.65	UNICOM 123.05(CTAF) 0
---------------------------	--	---------------------------------



SE-2, 11 JUN 2026 to 09 JUL 2026

SE-2, 11 JUN 2026 to 09 JUL 2026



CATEGORY	A	B	C	D
LPV DA	284-1	258 (300-1)		NA
LNAV/VNAV DA	276-1	250 (300-1)		NA
LNAV MDA	480-1	454 (500-1)	480-1 ³ / ₈ 454 (500-1 ³ / ₈)	NA
CIRCLING	480-1 454 (500-1)	520-1 494 (500-1)	720-2 694 (700-2)	NA