

APP CRS	Rwy Ldg	<b>3500</b>
<b>316°</b>	TDZE	<b>1233</b>
	Apt Elev	<b>1233</b>

# RNAV (GPS) RWY 32

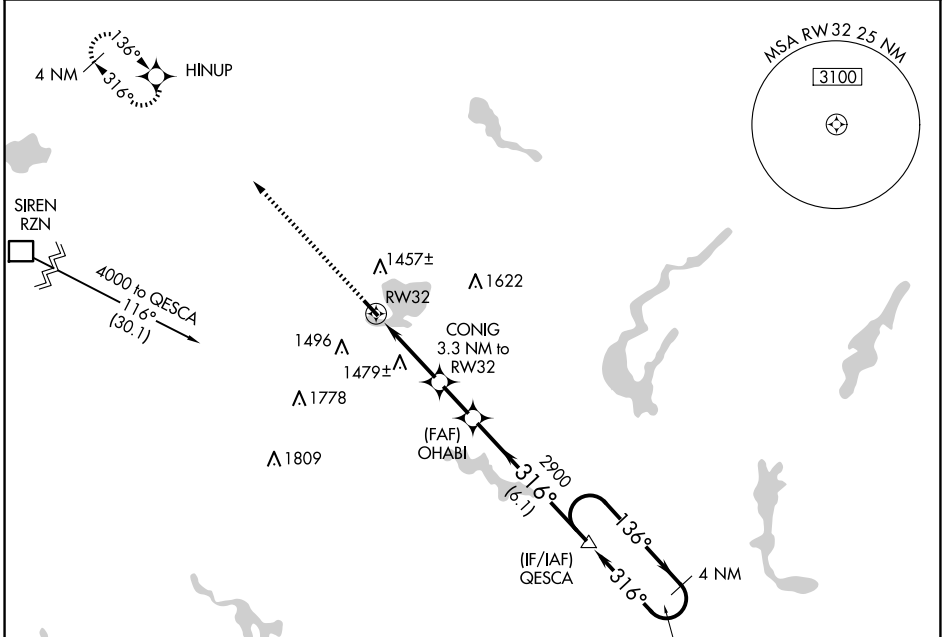
SHELL LAKE MUNI (SSQ)

RNP APCH.

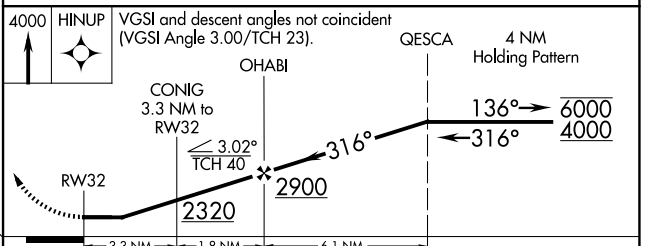
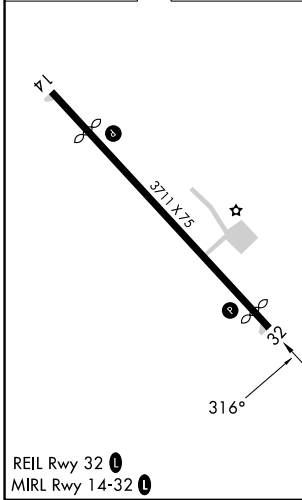
**▼** Procedure NA at night. Rwy 32 helicopter visibility reduction below 1 SM NA.  
**▲ NA** Use Cumberland altimeter setting.

MISSED APPROACH: Climb to 4000 direct HINUP and hold.

UBE AWOS-3PT <b>119.175</b>	MINNEAPOLIS CENTER <b>126.45 276.4</b>	UNICOM <b>122.8 (CTAF) 0</b>
--------------------------------	---	---------------------------------



ELEV 1233	<b>D</b>	TDZE 1233
-----------	----------	-----------



CATEGORY	A	B	C	D
LNAV MDA	1800-1 567 (600-1)	1800-1 5/8 567 (600-1 5/8)	1800-1 3/4 567 (600-1 3/4)	1800-1 3/4 567 (600-1 3/4)
CIRCLING	1840-1 607 (700-1)	1840-1 3/4 607 (700-1 3/4)	2020-2 1/2 787 (800-2 1/2)	2020-2 1/2 787 (800-2 1/2)

EC-3, 11 JUN 2026 to 09 JUL 2026

EC-3, 11 JUN 2026 to 09 JUL 2026